

The area of the Cornus basilicas

Patrimonio culturale
SARDEGNA Virtual Archaeology



■ Amphorae

Most of the amphorae found in Cornus come from the cemetery area of Columbaris, in secondary position; that is after being used as a container they were reused as *enchytrismos* graves or recovered in filling and levelling layers. The African items are the main ones (figs. 1-2), followed by eastern amphorae and of Iberian origin; there are fewer of those from the Aegean and Southern Italy. Those containers permit the reconstruction of a trading framework which shows there were few trading relations between the Cornus centre and Southern Italy, while it shows northern Africa as the main interlocutor.

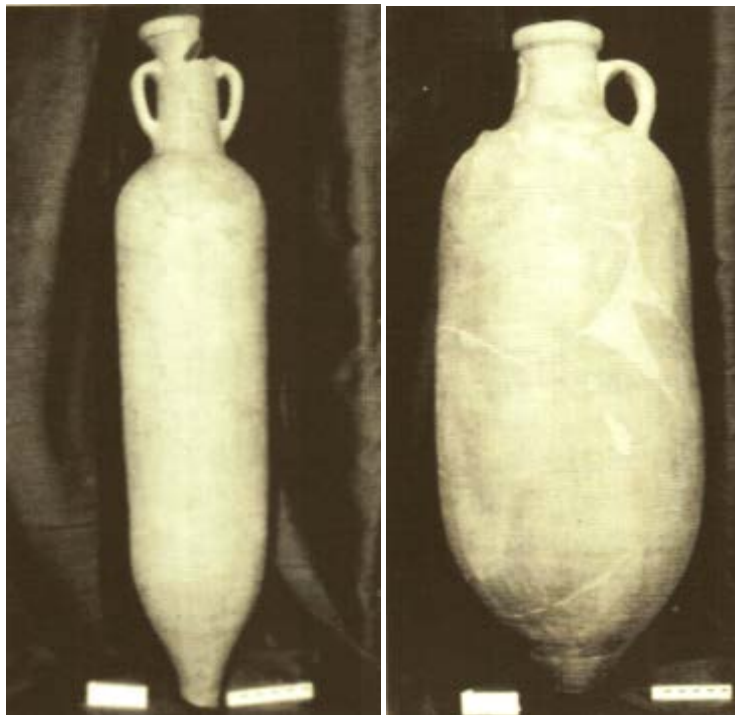


Fig. 1 - African amphorae used in tombs 97 (on the right) and 87 (on the left), (from MARCHETTI 2000, p. 308, figs. 3-4).

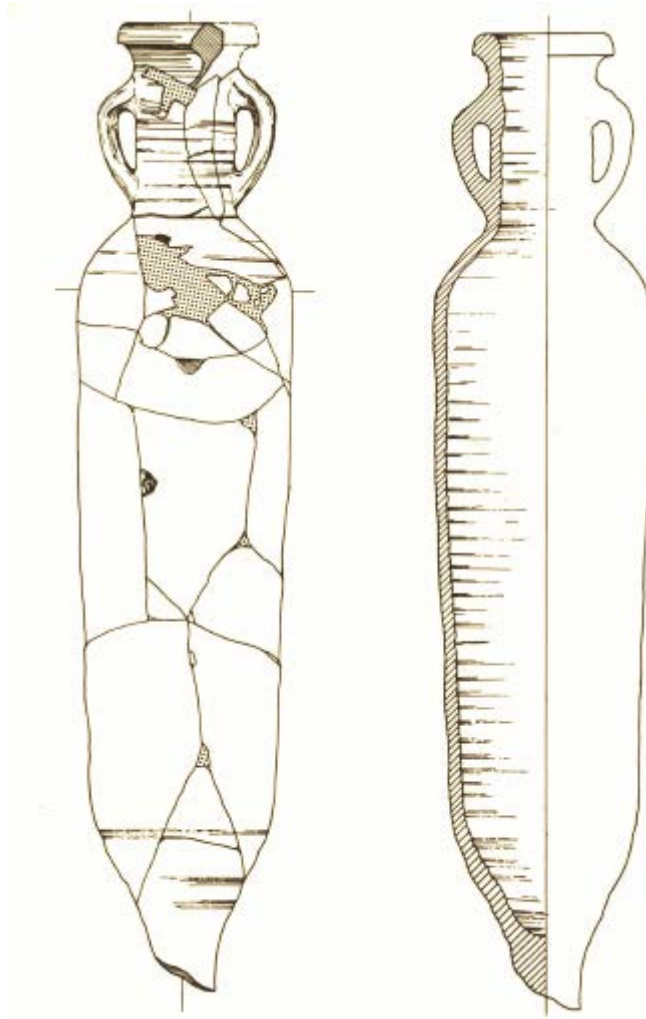


Fig. 2 - Columbaris, amphora used in tomb 97 for a child's burial (from CUGLIERI I, tab. LXI).

Through the amphorae, this area also spread a series of products contained in them such as oil, wine, *garum*, perfumes and other pottery items placed in the holds of cargo ships with them. Other large trading partners were the East (see fig. 3) and the Iberian Peninsula (see fig. 4) from where the ships set sail for Sardinia, often as a stop-off point, following the routes for the central Italian ports. Some of these ships have been found as wrecks in the stretch of sea in front of the western coast of Sardinia.

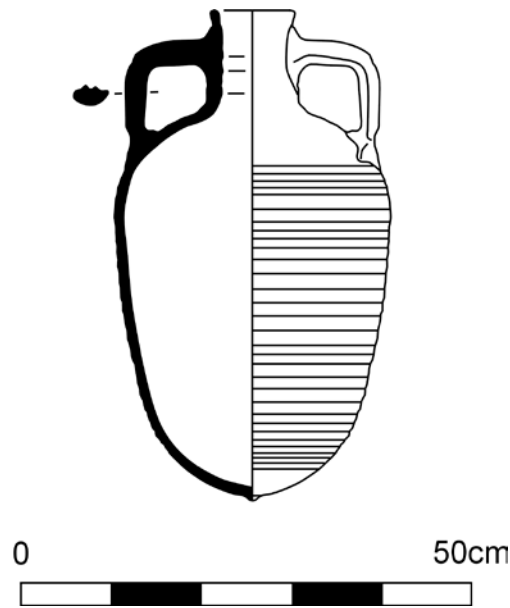


Fig. 3 - Late Roman Amphora 1

(from http://archaeologydataservice.ac.uk/archives/view/amphora_ahrb_2005/drawings.cfm?id=236).



Fig. 4 - Iberian amphorae of the type Almagro 51 C and drawings
(from <http://amphorae.icac.cat/tipol/view/75>).

All the classic amphorae found in the Cornus area are characterised by a notable type of shape: this information could be a clue to a supply system in which the union of loads was the main method. The period that, based on findings, shows the most florid relationship with trading partners occurred between the 4th and 6th century A.D., until the 7th. Also, it can be said that the period from when the amphora was no longer used and the moment when it was used again in tombs was almost the same period. Use of amphorae for burials occurred until at least the 6th century without interruption, especially as *enchytrismos* for children, for barrow tombs (fig. 5) and for ground tombs: the container was used as a whole, often broken lengthways or without the rim.

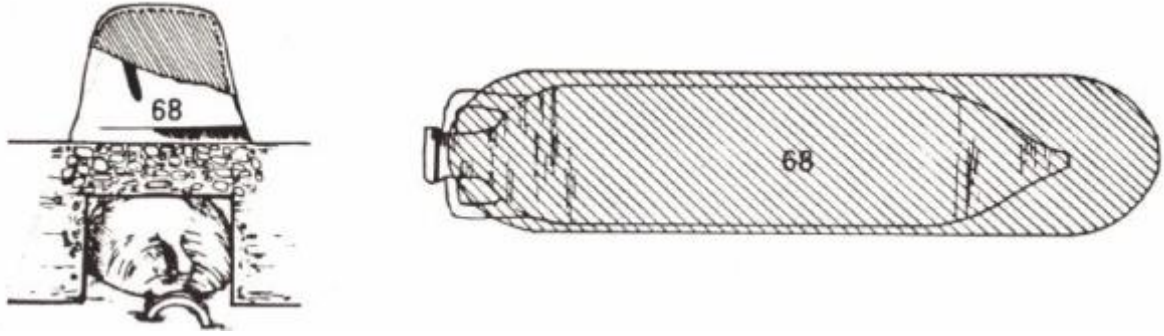


Fig. 5 - Columbaris, *enchytrismos* dominated by the tumulus (t. 68): section of view from above in transparency (from GIUNTELLA *et al.* 1985, p. 20, fig. 9).



■ Credits

Deepening card edited by Dr. Claudia Cocco and Dr. Francesca Collu

■ Bibliographic abbreviations

- AMANTE SIMONI, GIUNTELLA, PANI ERMINI, STIAFFINI 1987 C. AMANTE SIMONI, A. M. GIUNTELLA, L. PANI ERMINI, D. STIAFFINI, *Ricerche di archeologia post-classica nella Sardegna centro-meridionale*, in QuadCa, IV, 2, 1987, pp. 79-104.
- Cornus I.2* A. M. GIUNTELLA (a cura di), *Cornus I. 2. L'area cimiteriale orientale. I materiali= Mediterraneo tardoantico e medievale*, 13. 2, Oristano 2000.
- CUGLIERI I AA.VV., *L'archeologia romana e altomedievale nell'Oristanese. Atti del Convegno di Cuglieri (22-23 giugno 1984) = Mediterraneo tardoantico e medievale, Scavi e ricerche*, 3, Taranto 1986.
- GIUNTELLA 1987 A. M. GIUNTELLA, *I materiali ceramici* in AMANTE SIMONI, GIUNTELLA, PANI ERMINI, STIAFFINI 1987, pp. 86-89.
- GIUNTELLA *et al.* 1985 A. M. GIUNTELLA, G. BORGHETTI, D. STIAFFINI, *Mensae e riti funerari in Sardegna: la testimonianza di Cornus = Mediterraneo Tardoantico e medievale. Scavi e ricerche*, 1, Taranto 1985.
- Insulae Christi* P. G. SPANU (a cura di), con la collaborazione di M. C. OPPO e A. BONINU, *Insulae Christi. Il cristianesimo primitivo in Sardegna, Corsica e Baleari = Mediterraneo tardoantico e medievale. Scavi e ricerche* 16, Oristano 2002.
- MARCHETTI 2000 M. I. MARCHETTI, *Anfore africane*, in MARCHETTI, STASOLLA 2000, pp. 305-322.

- MARCHETTI, STASOLLA 2000 M. I. MARCHETTI, F. R. STASOLLA, *Le anfore*, in *Cornus* 1.2, pp. 305-339.
- SALVI 2006 D. SALVI, *Macine e vetro nel relitto di Su Pallosu (San Vero Milis, Oristano)*, in *Tharros felix* 2, pp. 155-163.
- SECHI 2006 E. SECHI, *Il relitto di Sa Tonnara-A*, in *Tharros Felix* 2, pp. 164-180.
- SERENI 2002 A. SERENI, *Osservazione sui reperti rinvenuti nell'area cimiteriale orientale di Cornus*, in *Insulae Christi*, pp. 253-276.
- SPANU 2006a P. G. SPANU, *Ricerche di archeologia subacquea nel Korakodes portus*, in *Tharros Felix* 2, pp. 94-142.
- SPANU 2006b P. G. SPANU, *Il relitto tardo-antico di Mandriola-A*, in *Tharros Felix* 2, pp. 181-196.
- STASOLLA 2000 F. R. STASOLLA, *Anfore orientali e iberiche*, in MARCHETTI, STASOLLA 2000, pp. 322-338.
- Tharros Felix* 2 A. MASTINO, P.G. SPANU, R. ZUCCA (a cura di), *Tharros Felix* 2, Roma 2006.

■ Periodicals and magazines

QuadCa

Quaderni della Soprintendenza Archeologica per le Province di Cagliari e Oristano, Cagliari, I, 1986 e ss.



UNIONE EUROPEA



REPUBBLICA ITALIANA



REGIONE AUTÒNOMA DE SARDIGNA
REGIONE AUTONOMA DELLA SARDEGNA

La Sardegna cresce con l'Europa



UNIONE EUROPEA

Progetto cofinanziato dall'Unione Europea
Programma Operativo FESR 2007-2013

FESR - Fondo Europeo di Sviluppo Regionale - Asse I, Linea di Attività 1.2.3.a