

The area of the Cornus basilicas

Patrimonio culturale
SARDEGNA Virtual Archaeology



■ Jewellery

A considerable number of jewels such as personal ornaments found on the deceased come from the Cornus necropolises: mainly rings, necklaces and beads, armillas and earrings.

At least eight finger rings in bronze and silver were found, out of context, but referring to the period between the 4th and 6th centuries A.D., dated by the artistic characteristics. Three rings decorated with snakes, symbol of good and evil were found; on one, interpreted as a wedding ring from t. 115, there are engraved letters and a monogrammed cross (fig. 1). Again, during the digs inside the tombs from the 4th to the beginning of the 7th century A.D., rings were found with a flat top and with precious stones set in them (figs. 2-3). At times the decoration had Christian and pagan symbols, but the recovery of Punic gold-working is obvious.



Fig. 1 - Cornus, drawing of the silver ring with snake and inscription
(from MARTORELLI 2000a, tab. II, no.15).



Fig. 2 - Digital gold ring with double bezel and amethyst (photo di P. DESSÌ - RA_00007944/R.A.S.).

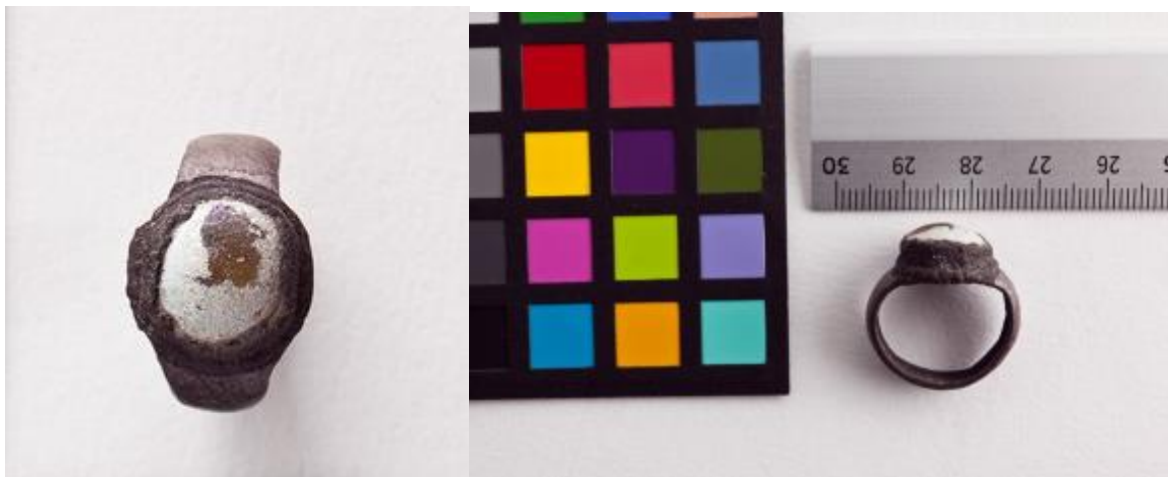


Fig. 3 - Columbaris, digital silver ring (photo by N. MONARI - RA_00162650/R.A.S.).

Several beads in various shapes and materials (amber, glass paste, gemstones and terracotta) recovered inside and outside the tombs perhaps forming necklaces, bracelets or used as amulets. In addition to an amber necklace (fig. 4), they found clips proving use to close the sequence of gems.





Fig. 4 - *Antiquarium* of Cuglieri: amber necklace from tomb 38 in Columbaris (from CUGLIERI I, fig. 22).

Of special significance the finding of glass armillas in some tombs 8, 72 and 96, an item category rarely found in Sardinia and all the western area, but widely documented in the East between the 3rd and 7th century A.D. Only one item in Cornus is different from the examples of Eastern production: it is a black glass ring with a multi-coloured decoration, found in the layers of frequentation of the 7th century A.D., that is reminiscent of glass bead decoration from Byzantine and Germanic areas that were widespread in the 6th-7th century A.D. (fig. 5). Two bronze open-ended bangles (fig. 6) found in tomb 102 are also from this period, referring to a very frequent type in the high Medieval times and in Byzantine necropolises, and in Longobard culture. Out of context is an armilla with one end shaped as a snake's head, dated based on comparison with similar items as 7th century A.D.

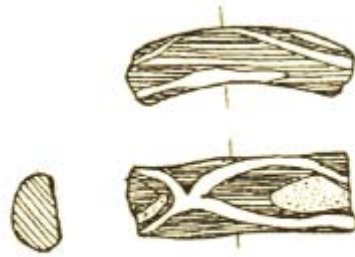


Fig. 5 - Columbaris: a black glass round armband with multi-coloured decoration (from MARTORELLI 2000a, tab. III, n. 21).



Fig. 6 - Columbaris: bronze armilla with open ends (from MARTORELLI 2000a, tav. III, no. 24).

The types of earrings found in Cornus show a panorama influenced by new German and Byzantine cultural models and at the same time, still linked to previous traditions: the first group includes shapes introduced by German races with polyhedric types and welded rings (fig. 7), similar to the so-called "pinguentino"; the second type, with a hook, a flower or a simple ring are typically Roman but are inspired by Phoenician-Punic productions with spheres and two earrings with a mammary like sphere, the latter being used in the high Medieval times. Those jewels were found in all the stages of the cemetery area, that is from the end of the IV to the VII century A.D.

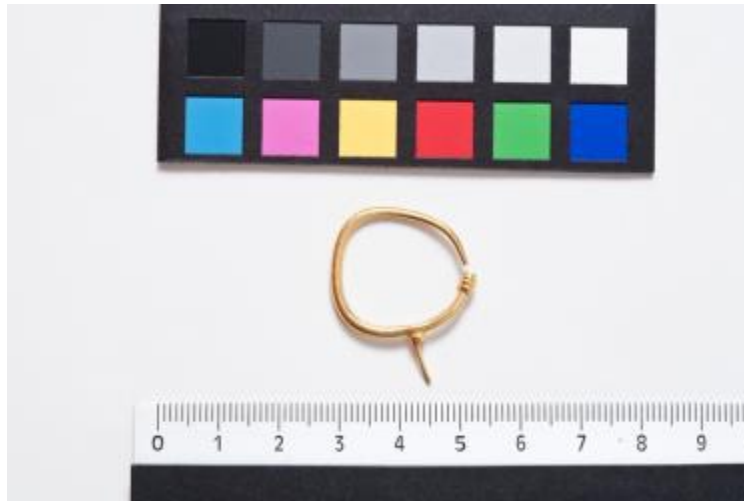


Fig. 7 - Circle earring (photo by P. DESSÌ - RA_00007942/R.A.S.).



■ Credits

Deepening card edited by Dr. Claudia Cocco and Dr. Francesca Collu

■ Bibliographic abbreviations

- Ai confini dell'impero* P. CORRIAS, S. COSENTINO (a cura di), *Ai confini dell'impero: storia, arte e archeologia della Sardegna bizantina*, Cagliari 2002.
- AMANTE SIMONI 1986b C. AMANTE SIMONI, *I corredi altomedievali (Il metà del VI-VII secolo)*, in AMANTE SIMONI, MARTORELLI 1986, pp. 171-177, catalogo nn. 153-154, pp. 187-189.
- AMANTE SIMONI 1987b C. AMANTE SIMONI, *I corredi*, in AMANTE SIMONI *et al.* 1987, pp. 83-86.
- AMANTE SIMONI *et al.* 1987 C. AMANTE SIMONI, A. M. GIUNTELLA, L. PANI ERMINI, D. STIAFFINI, *Ricerche di archeologia post-classica nella Sardegna centro-medievale*, in QuadCa 4, II, 1987, pp. 79-103.
- AMANTE SIMONI, MARTORELLI 1986 C. AMANTE SIMONI, R. MARTORELLI, *I corredi funerari e la suppellettile metallica. Cultura, Materiali e Fasi Storiche del Complesso Archeologico di Cornus. Primi risultati di una ricerca*, in CUGLIERI I, pp. 161-189.
- Cornus* I.2 A. M. GIUNTELLA (a cura di), *Cornus I. 2. L'area cimiteriale orientale. I materiali= Mediterraneo tardoantico e medievale*, 13. 2, Oristano 2000.
- CUGLIERI I AA.VV., *L'archeologia romana e altomedievale nell'Oristanese. Atti del Convegno di Cuglieri (22-23 giugno 1984) = Mediterraneo tardoantico e medievale, Scavi e ricerche*, 3, Taranto 1986.

- "L'Africa romana" VII A. MASTINO (a cura di), *L'Africa romana. Atti del VII Convegno di studio* (Sassari, 15-17 dicembre 1989), Sassari 1990.
- MARTORELLI 1986 R. MARTORELLI, *I corredi tardo-romani (IV - prima metà del VI secolo)*, in AMANTE SIMONI, MARTORELLI 1986, pp. 161-170, catalogo pp. 178-186.
- MARTORELLI 1990 R. MARTORELLI, *Persistenze puniche nei corredi funerari tardoantichi ed altomedievali del complesso di Cornus (S. Caterina di Pittinurri-Oristano)*, in "L'Africa romana" VII, pp. 538-548.
- MARTORELLI 2000a R. MARTORELLI, *I materiali metallici e gli oggetti di corredo*, in *Cornus* l. 2, pp. 23-50.
- MARTORELLI 2001b R. MARTORELLI, *Artigianato metallico nella Tardantichità e nell'Altomedioevo in Sardegna*, in Associazione culturale Filippo Nissardi (a cura di), *Architettura, arte e artigianato nel Mediterraneo dalla Preistoria all'alto Medioevo. Atti della Tavola rotonda internazionale in memoria di Giovanni Tore* (Cagliari, 17-19 dicembre 1999), Oristano 2001, pp. 377-393.
- MARTORELLI 2002b R. MARTORELLI, *Documenti di cultura materiale pertinenti agli scambi commerciali e alle produzioni locali*, in *Ai confini dell'impero*, pp. 137-148.
- MARTORELLI 2011 R. MARTORELLI, *Usi e consuetudini funerarie nella Sardegna centro-occidentale fra tarda antichità e alto Medioevo*, in *Oristano e il suo territorio* I, pp. 701-759.
- Oristano e il suo territorio* I P. G. SPANU, R. ZUCCA (a cura di), *Oristano e il suo territorio, 1. Dalla preistoria all'alto Medioevo*, Roma 2011.

■ Periodicals and magazines

QuadCa

Quaderni della Soprintendenza Archeologica per le Province di Cagliari e Oristano, Cagliari, I, 1986 e ss.





UNIONE EUROPEA



REPUBBLICA ITALIANA



REGIONE AUTÒNOMA DE SARDIGNA
REGIONE AUTONOMA DELLA SARDEGNA

La Sardegna cresce con l'Europa



UNIONE EUROPEA

Progetto cofinanziato dall'Unione Europea
Programma Operativo FESR 2007-2013

FESR - Fondo Europeo di Sviluppo Regionale - Asse I, Linea di Attività 1.2.3.a