

The area of the Cornus basilicas

Patrimonio culturale
SARDEGNA Virtual Archaeology



■ Furniture-casket from the main basilica

In the bishop's basilica in Cornus, the so-called *consignatorium* (fig. 1) was next to the right-hand *pastoforion*, where the back wall contained a stone decoration (fig. 2).

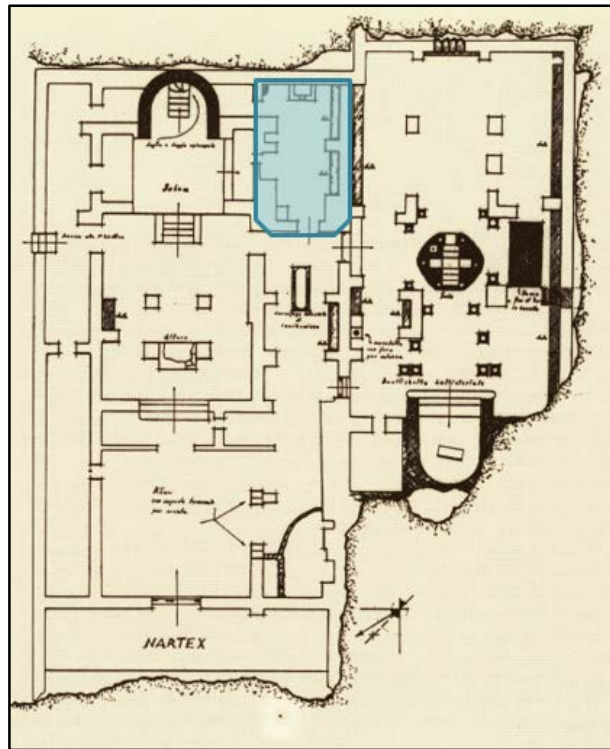


Fig. 1 – Plan of the main basilica with indication of the *consignatorium* (from FARRIS 1993, p. 100, tab. 5).

This is a kind of parallelepiped box (h. cm 63 x length cm 1,36 x width cm 82), the sides of which are three limestone slabs, while the *consignatorium* wall is the back wall (figs. 3-5); uncovered on top, on the front there is a square hollow, which originally may have been closed by a lid, perhaps moveable, made of an unknown material and that probably contained a hatch or a lock in metal (similar to lock, see fig. 6; for the box see fig.s 7-8).

The box has been interpreted in various ways: as an altar-shrine, as a furniture-casket, holding the seal and furnishings linked to the functions held by the bishop in that chamber. With benches, this room was a space dedicated to the celebration of confirmation and the signing of bishop's documents.

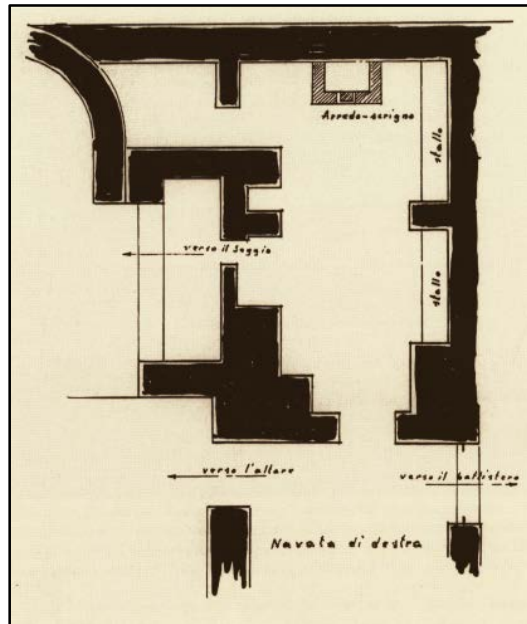


Fig. 2 - Plant of the *consignatorium* (from FARRIS 1993, p. 75, tab. 8).



Fig. 3 - Main Basilica: furniture-casket of the *consignatorium* (photo by Unicity S.p.A.).



Fig. 4 - Main Basilica: furniture-casket of the *consignatorium* (photo by Unicity S.p.A.).

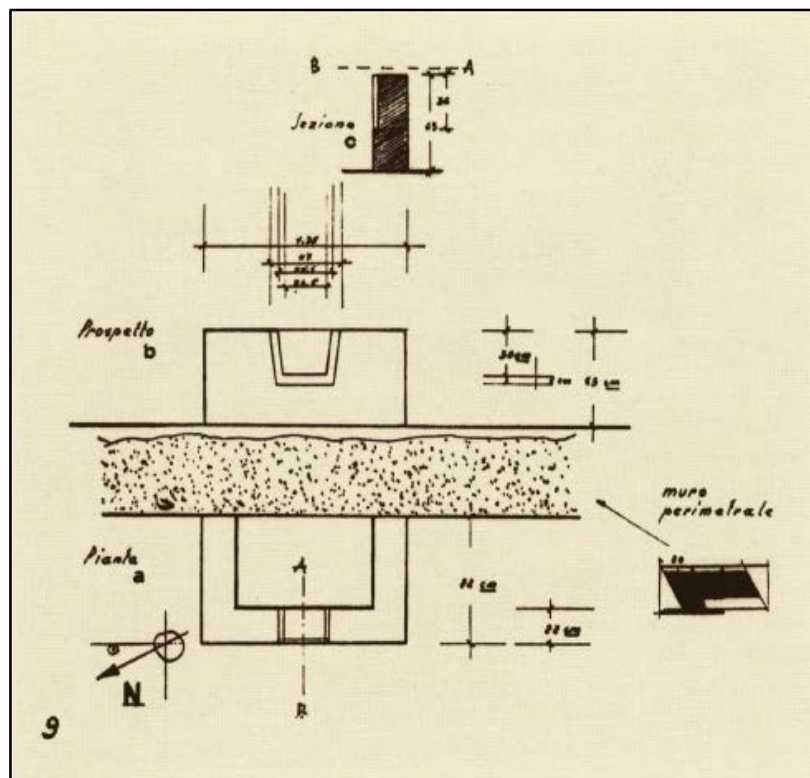


Fig. 5 - Perspective and map of the Cornus casket (from FARRIS 1993, p. 76, Tab. 9).



Fig. 6 - Ivory casket with engraved decorations and silver engraved kept in the Louvre Museum in Paris (from <http://it.wikipedia.org/wiki/Scrigno>).



Fig. 7 - Pola (Croatia): capsella of Samagher of the V century A.D. (from <http://www.arte.it/guida-arte/venezia/da-vedere/opera/capsella-di-samagher-832>).



Fig. 8 - Brescia: Museum of S. Giulia, Syrian Alexandrian ivory box-shrine
(from http://www.santagiulia.info/museo_di_santa_giulia/collezione_avorio/index.htm).

■ Credits

Deepening card edited by Dr. Claudia Cocco and Dr. Francesca Collu

■ Bibliographic abbreviations

- ADDIS 1966 O. ADDIS, *Il complesso paleocristiano di Cornus secondo i risultati di un recente scavo*, in *Atti del XIII Congresso di storia dell'architettura* (Cagliari, 6-12 aprile 1963), I, Roma, pp. 181-190.
- FARRIS 1993 G. FARRIS, *Le aree paleocristiane di Cornus*, Oristano 1993.
- ZANCHI 2003 G. ZANCHI, *Lo spirito e le cose. Luoghi della liturgia = Sestante*, 19, Milano 2003.



UNIONE EUROPEA



REPUBBLICA ITALIANA



REGIONE AUTÒNOMA DE SARDIGNA
REGIONE AUTONOMA DELLA SARDEGNA

La Sardegna cresce con l'Europa



UNIONE EUROPEA

Progetto cofinanziato dall'Unione Europea
Programma Operativo FESR 2007-2013

FESR - Fondo Europeo di Sviluppo Regionale - Asse I, Linea di Attività 1.2.3.a