



UNIONE EUROPEA



REPUBBLICA ITALIANA



REGIONE AUTÒNOMA DE SARDIGNA
REGIONE AUTONOMA DELLA SARDEGNA

Giants' tomb of Thomes

Patrimonio culturale
SARDEGNA Virtual Archaeology



■ Bronze cauldron (Cala Gonone)

A wonderful example of whole bronze cauldron was found in Cala Gonone-Dorgali. Described by Margaret Guido in 1963, it is now on show in the Civic Archaeological Collections in the City of Milan.

The model, based on a Cypriot version, is biconical.

The handle attachment is formed by a plaque with four spirals side by side, with horizontal ribbing on top, equipped with a small handle (figs. 1-2).



Fig. 1 - Bronze cauldron from Cala Gonone-Dorgali

(from http://www.museoarcheologicodorgali.it/wp/museo_archeologia_in_sardegna/la-storia-di-dorgali-in-20-reperti/).

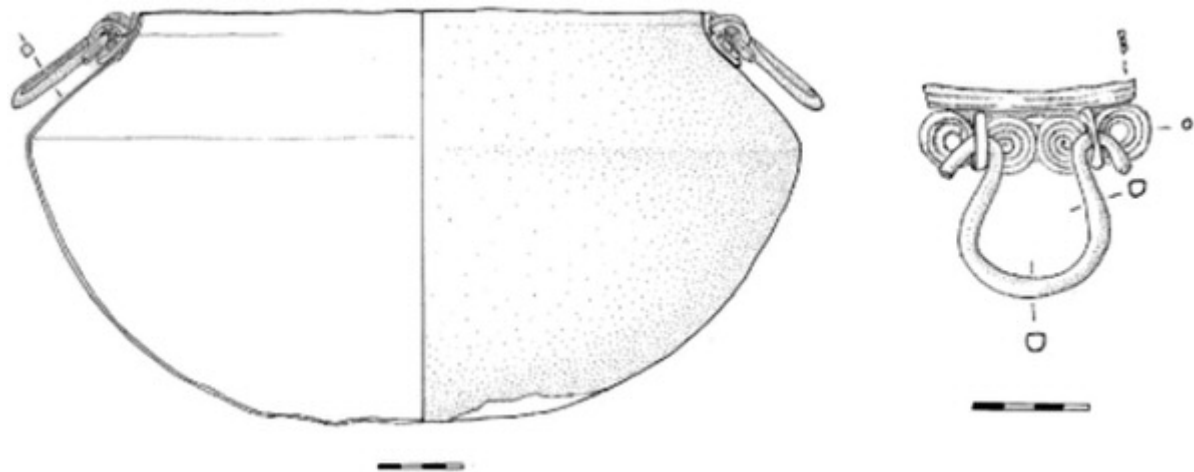


Fig. 2 - Graphic reconstruction of the bronze cauldron from Dorgali (from SANTONI 2015, fig. 13, p. 125). The specimen may be compared to another similar cauldron, found completely crumpled as scrap metal in the storage room of San Francesco di Bologna, and now on display at the Civic Archaeological Museum of Bologna, which has an identical fourfold spiral attachment of the handle (fig. 3).



Fig. 3 - Crumpled cauldron from the storage room of San Francesco di Bologna (from LO SCHIAVO 1990, p. 250, fig. 235).



During the Recent and Final Bronze Age (12th-10th century B.C.) Bronze basins and cauldrons of various sizes began to be produced that add to the more widespread pot containers owned by everyone. These bronze sheet vessels are a useful dating element when examining the shape of the handles and the attachments which often recall forms documented in extra-insular contexts from the Aegean and eastern Tyrrhenian areas. A triple spiral attachment (fig. 4) relating to a bronze cauldron, framed chronologically between the XII-X century BC, and similar to the Dorgali example, was found in the Nuraghic complex of Sa Sedda 'e Sos Carros- Oliena.



Fig. 4 - A threefold spiral attachment of a bronze cauldron found in the Nuraghic complex of Sa Sedda 'e Sos Carros of Oliena-Nu (from Salis 2014, p. 342).

The Archaeological Museum of Dorgali displays a drawing and a photo of the artefact from Dorgali.



■ Credits

Deepening card edited by Dr. Emanuela Atzeni

■ Bibliography

GUIDO M., *Sardinia*, London, 1963, p. 97 ss.

LO SCHIAVO F., *La sardegna nuragica e il mondo mediterraneo*, in AA.VV., *La civiltà nuragica*, Milano 1990, pp. 243-244, figg. 234-236.

MORAVETTI A., ALBA E., FODDAI L. (a cura di), *La Sardegna Nuragica. Storia e materiali*, Sassari 2014, pp. 11.

PULACCHINI D., *Il museo archeologico di Dorgali*, Sardegna Archeologica. Guide e itinerari, 27, Sassari 1998, p. 24.

SALIS G., *Scheda 19-Ansa di bacile*, in MORAVETTI A., ALBA E., FODDAI L. (a cura di), *La Sardegna Nuragica. Storia e materiali*, Sassari 2014, p. 342.

SANTONI V., *Contesti del quadro culturale delle statue di Mont'è Prama*, in AA.VV., *le sculture di Monti Prama. La mostra*, Roma 2015, pp. 125-126, fig. 13.





UNIONE EUROPEA



REPUBBLICA ITALIANA



REGIONE AUTÒNOMA DE SARDIGNA
REGIONE AUTONOMA DELLA SARDEGNA

La Sardegna cresce con l'Europa



UNIONE EUROPEA

Progetto cofinanziato dall'Unione Europea
Programma Operativo FESR 2007-2013

FESR - Fondo Europeo di Sviluppo Regionale - Asse I, Linea di Attività 1.2.3.a