



UNIONE EUROPEA



REPUBBLICA ITALIANA



REGIONE AUTONOMA DE SARDIGNA
REGIONE AUTONOMA DELLA SARDEGNA

Necropolis of Sant'Andrea Priu

Patrimonio culturale
SARDEGNA Virtual Archaeology



■ The San Simeone megalithic boundaries and fortress

The San Simeone archaeological complex is one of several archaeological, architectural, historical and monumental heritage in the municipal area. The area on which the historical complex stands is 625 metres above sea level, on the *Su Monte* plain, where the long anthropic continuity is proven by the presence of monuments that can be dated to a period running from the Nuragic Age to the Middle Ages. From this high plain, which was of great strategic importance, it was possible to control the route between the high plain of Campeda and Meilogu and the connections between the north and the western-central area of Sardinia (fig. 1).



Fig. 1 - The nuragic boundary area (from Wikimapia (reprocessing by M.G. Arru).

Here, there is a fortified site formed by eight megalithic boundaries (*muras*), including the best known ones *Baddadolzu*, *S Iligheddu*, *Mura Cariasia*, *Tilipera* and *Aeddo*. The boundaries, controlled by the ruins of the *Su Monte* nuraghe, are close to each other and comprise strong walls that are 2 metres high and about 2.5 metres thick, round or trapezoid in shape, which are found by entering a rectangular entrance (fig. 2).

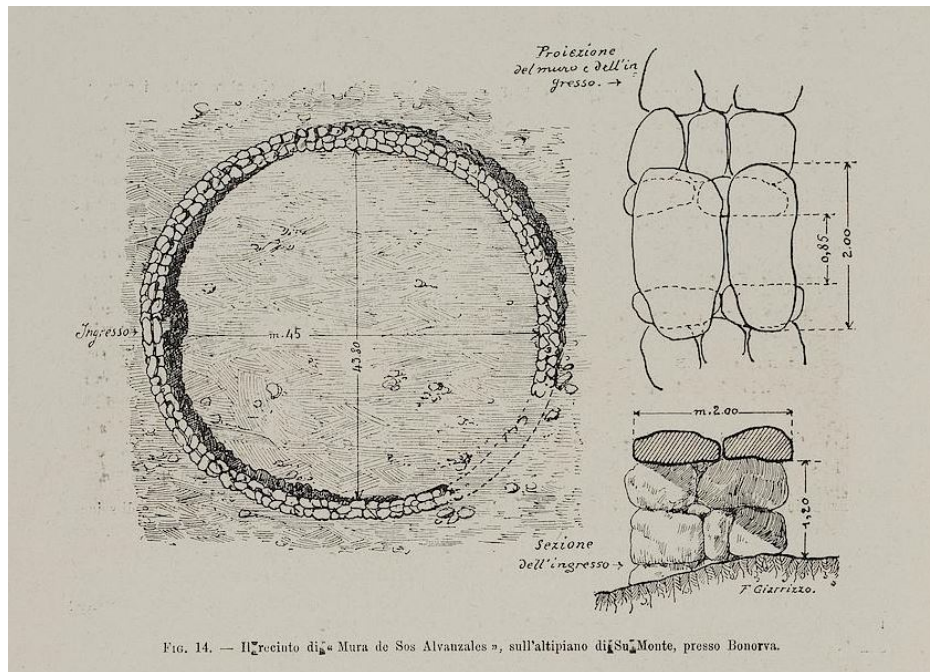


Fig. 2 - The *Mura de Sos Alvanzales* boundary (by Taramelli 1919, fig. 14).

The archaeologist Giovanni Lilliu identified these ruins as relevant to Nuragic Age structures, included in a huge fortified system that must have occupied several points on the Campeda high plain (fig.3). During the Punic Age, this site was used as a *castrum*, and the *muras*, according to Lilliu, became guard-posts for the Punic fortification.

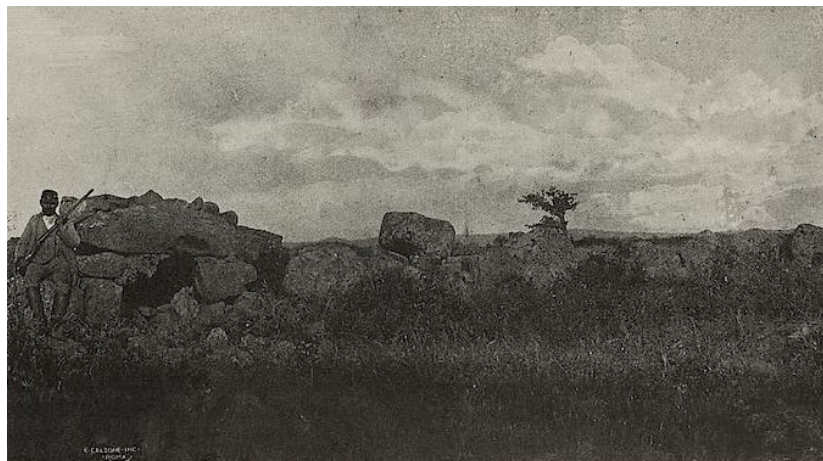


Fig. 3 - Old photo of the *Mura de Sos Alvanzales* boundary (by Taramelli 1919, fig. 15).

On the edges of the plain, in the San Simeone area, a short distance from the *muras*, the area where the Punic fortress stood has been identified, dated to the 5th century B.C.

Where the remains of two towers can still be seen, that protected the settlement from incursions by nearby populations. The site, due to its strategic position and proximity to the *a Karalibus Turrem* road, was probably used in the Roman Era as a military outpost.

The remains of the medieval village of *Sanctus Simeon* and the church of the same name located on private property on the plain that lead to “Su Monte” and the Campeda plain are also close to the *muras*. Today, the single-apse building is now rather deteriorated (fig. 4).



Fig. 4 - The ruins of the church of San Simeone, Bonorva
(photo by Cinzia Olianias <http://www.panoramio.com/photo/65011047>).

The sanctuary, dedicated to San Simeone, was built around 1354 on the top of the high plain at Campeda that looks down to the Semestene valley towards Bonorva, and was certainly one of the first settlements of people in Bonorva. The inhabitants only stayed about thirty years, however, as due to the unhealthy nature of the area, they abandoned it to live further down the valley, where the first houses of the new town were built around a rural church. Some ruins of the houses still remain, with collapsed wall, reported from the nineteenth century by Vittorio Angius and Alberto La Marmora and erroneously attributed to the Roman Age, and some arches from the chapel dedicated to the saint.

■ Credits

Deepening card edited by Dr. Maria Grazia Arru and Dr. Emanuela Atzeni

■ Bibliography

BARRECA F., *Bonorva (Sassari), località San Simeone*, in *I sardi: la Sardegna dal Paleolitico all'Età Romana*, Milano 1984, pp. 267-268.

DERIU G., *L'insediamento umano medievale nella Curatoria di Costa de Adde*, Sassari 2000, pp. 36-40.

FLORIS F. (a cura di), *La Grande Enciclopedia della Sardegna*, II, Sassari 2007, p. 21.

LILLIU G., *L'Architettura Nuragica*, in *Atti del XIII Congresso di Storia dell'Architettura del Centro di Studi per la Storia dell'Architettura*, Roma 1966, pp. 17-92.

SECHI M., *Viabilità e dinamiche insediative in età romana nel territorio di Bonorva*, in *Studi sul paesaggio della Sardegna romana* (a cura di G. PIANU, N. CANU), Mores 2011, pp. 83-103.

TARAMELLI A., *Fortezze, Recinti, Fonti sacre e Necropoli preromane nell'Agro di Bonorva (Prov. di Sassari), con rilievi e disegni del Prof. Francesco Giarrizzo*, in *Monumenti Antichi dei Lincei*, XXV, 1919, coll. 765-904.





UNIONE EUROPEA



REPUBBLICA ITALIANA



REGIONE AUTÒNOMA DE SARDIGNA
REGIONE AUTONOMA DELLA SARDEGNA

La Sardegna cresce con l'Europa



UNIONE EUROPEA

Progetto cofinanziato dall'Unione Europea
Programma Operativo FESR 2007-2013

FESR - Fondo Europeo di Sviluppo Regionale - Asse I, Linea di Attività 1.2.3.a