



UNIONE EUROPEA



REPUBBLICA ITALIANA



REGIONE AUTONOMA DE SARDIGNA
REGIONE AUTONOMA DELLA SARDEGNA

Necropolis of Sant'Andrea Priu

Patrimonio culturale
SARDEGNA Virtual Archaeology



■ The territory of Bonorva in the Historic Age

To reconstruct the ancient anthropic landscape in the Bonorva area, the items found in some Roman necropolises on the Santa Lucia plain are very important, that provide important clues to the presence of roads and settlements, for which archaeological traces have been cancelled, and bear witness to the population of a fertile area rich in water resources and therefore particularly favourable for human settlement, were there were rural settlements (perhaps villas) and thermal baths.

In 1881, 5 capuchin tombs, a sarcophagus and a vaulted tomb were destroyed near the church of Santa Lucia. They were a part of a necropolis that developed South-East up to Sant' Andrea Priu, the place where some prehistorical *domus de janas* were re-used for burials.

In *Su Terranzu* (fig. 1), there was a necropolis made up of trench tombs dug artificially into the rock.

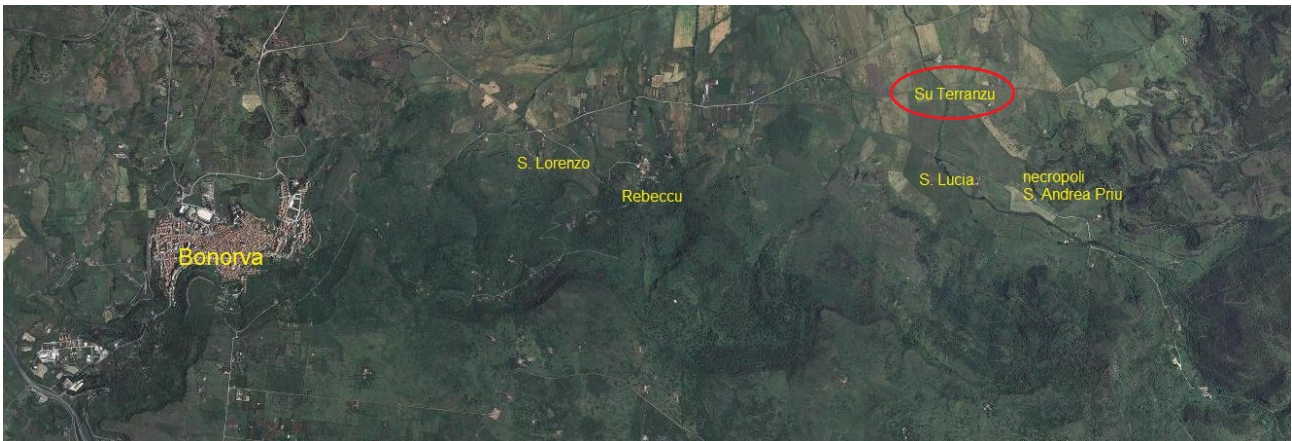


Fig. 1 - The *Su Terranzu* site, Bonorva (from Sardegnageoportale; reprocessing by M.G. Arru).

The tombs are small circular and square pits, while some are large and rectangular (figs. 2.3). Inside these pits, urns containing the deceased's ashes were placed and next to these, the burial items, mainly pottery (pitchers, plates, ointment jars).

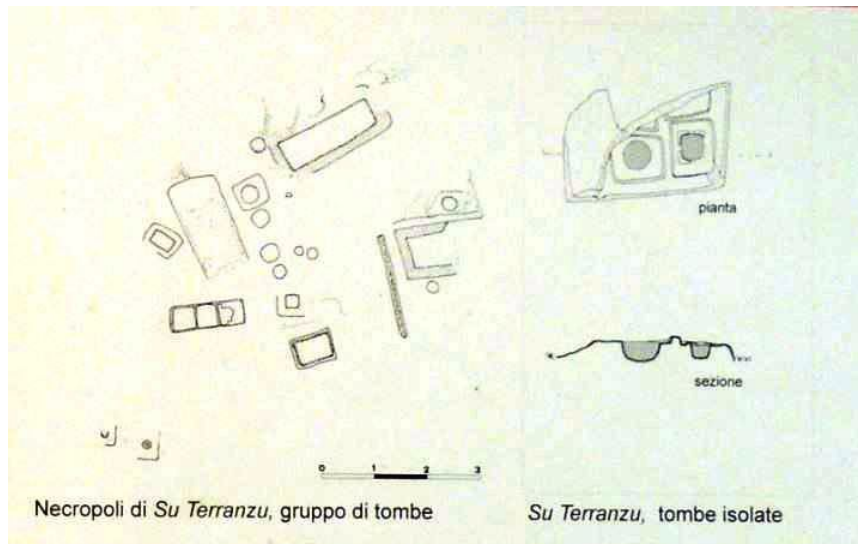


Fig. 2 - *Su Terranzu* necropolis (photo by Bonorva Archaeological Museum).



Fig. 3 - *Su Terranzu* necropolis (photo by Bonorva Archaeological Museum).

It was common to mark the tombs with stelae with engraved funeral symbols, placed vertically over the burial site. At *Su Terranzu* two from the Punic-Roman Age were recovered. The first carries the picture of a human heavily influenced by Punic iconographic tradition that re-emerged in rural areas (fig. 4); the second is partly preserved and is of a similar image (fig. 5).



Fig. 4 - Stelae from the Su Terranzu necropolis. Bonorva Archaeological Museum (photo by M.G. Arru).



Fig. 5 - Stelae from the Su Terranzu necropolis. Bonorva Archaeological Museum (photo by M.G. Arru).

■ Credits

Deepening card edited by Dr. Maria Grazia Arru and Dr. Emanuela Atzeni

■ Bibliography

FIORELLI G., alla voce *XXVI. Bonorva*, in *Notizie Scavi*, Roma 1881, pp. 71-72.

SECHI M., *Viabilità e dinamiche insediative in età romana nel territorio di Bonorva*, in *Studi sul paesaggio della Sardegna romana* (a cura di PIANU G., CANU N.), Mores 2011, pp. 83-103.

SECHI M., *La viabilità nella Sardegna romana tra le stationes di Hafa e Molaria*, in *Alta Formazione e Ricerca in Sardegna. Atti del Convegno di Studi Giovani Ricercatori (Sassari 16 dicembre 2011)*, a cura di CICU E., GAVINI A., SECHI M., Raleigh 2014, pp. 18-36.

SOLINAS M. (a cura di), *Bonorva, Museo Archeologico*, Bonorva 1999.

SPANO G., *Catacombe di S. Andrea Abriu presso Bonorva*, in *Bullettino Archeologico Sardo*, 11-12, 1956, pp. 170-179.





UNIONE EUROPEA



REPUBBLICA ITALIANA



REGIONE AUTÒNOMA DE SARDIGNA
REGIONE AUTONOMA DELLA SARDEGNA

La Sardegna cresce con l'Europa



UNIONE EUROPEA

Progetto cofinanziato dall'Unione Europea
Programma Operativo FESR 2007-2013

FESR - Fondo Europeo di Sviluppo Regionale - Asse I, Linea di Attività 1.2.3.a