



Necropolis of Sant'Andrea Priu

Patrimonio culturale
SARDEGNA Virtual Archaeology



■ Polished hatchet in green stone (from Puttu de Inza nuraghe in Bonorva)

Among the materials recovered at the Puttu de Inza nuraghe complex (fig. 1), located on the plain of Santa Lucia, there was also a rectangular green stone metamorphic hatchet, with a straight cut, 9 cm (fig. 2).

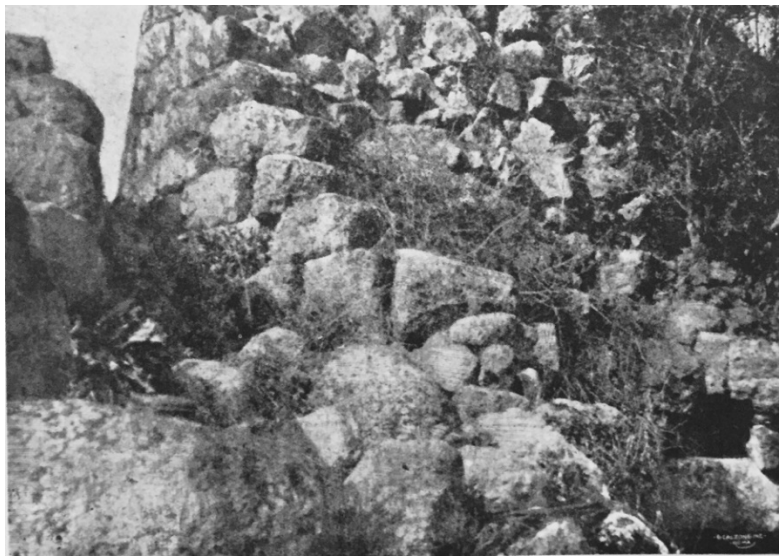


Fig. 1 - Puttu de Inza nuraghe (by Taramelli 1919, fig. 31, pages 77 - 78).

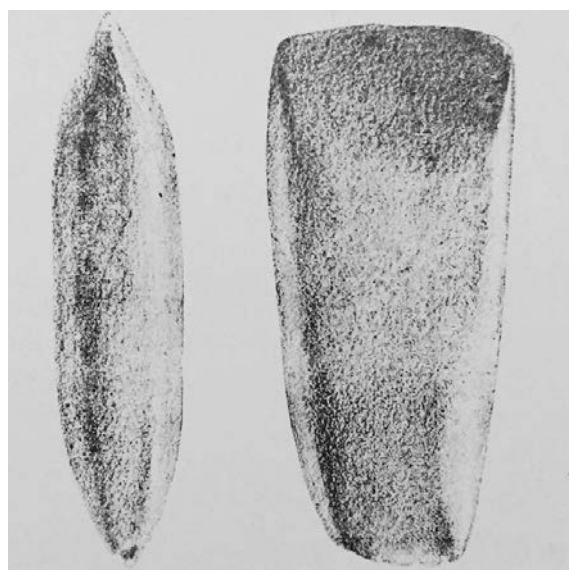


Fig. 2 - Green stone hatchet found at the Puttu de Inza nuraghe (by Taramelli 1919, fig. 33, pages 81 - 82).

This is a rather common tool, belonging to the stone industry category in polished stone, found in prehistoric settlements (figs. 3, 4, 5, 6).



Figs. 3, 4, 5, 6 - Arzachena, Necropoli di Li Muri, lithic hatchets (by Antona 2013 page 83).

The hatchet production process involved several stages:

- a) Search, extraction of raw material blocks or use of suitable local stones;
- b) Roughing and shaping of item by direct shaving using a striker, usually a hard, strong stone;
- c) Shaping the item by bush-hammering;
- d) Finishing the item by polishing/shining.

According to the archaeologist A. Taramelli, who was the first to study the monument at the beginning of the twentieth century, it comes from the time when the nuraghe was built.



■ Credits

Deepening card edited by Dr. Maria Grazia Arru and Dr. Emanuela Atzeni

■ Bibliography

ANTONA RUIU A., *Arzachena. Pietre senza tempo*, Sassari 2013, pp. 72-83.

TARAMELLI A., *Fortezze, Recinti, Fonti sacre e Necropoli preromane nell'Agro di Bonorva (Prov. di Sassari), con rilievi e disegni del Prof. Francesco Giarrizzo*, in *Monumenti Antichi dei Lincei*, XXV, 1919, coll. 765-904, p. 95, pp. 66 - 76.





UNIONE EUROPEA



REPUBBLICA ITALIANA



REGIONE AUTÒNOMA DE SARDIGNA
REGIONE AUTONOMA DELLA SARDEGNA

La Sardegna cresce con l'Europa



UNIONE EUROPEA

Progetto cofinanziato dall'Unione Europea
Programma Operativo FESR 2007-2013

FESR - Fondo Europeo di Sviluppo Regionale - Asse I, Linea di Attività 1.2.3.a