



UNIONE EUROPEA



REPUBBLICA ITALIANA



REGIONE AUTÓNOMA DE SARDIGNA  
REGIONE AUTONOMA DELLA SARDEGNA

# Nuraghic complex of S'Arcu 'e Is Forros

Patrimonio culturale  
**SARDEGNA** Virtual Archaeology

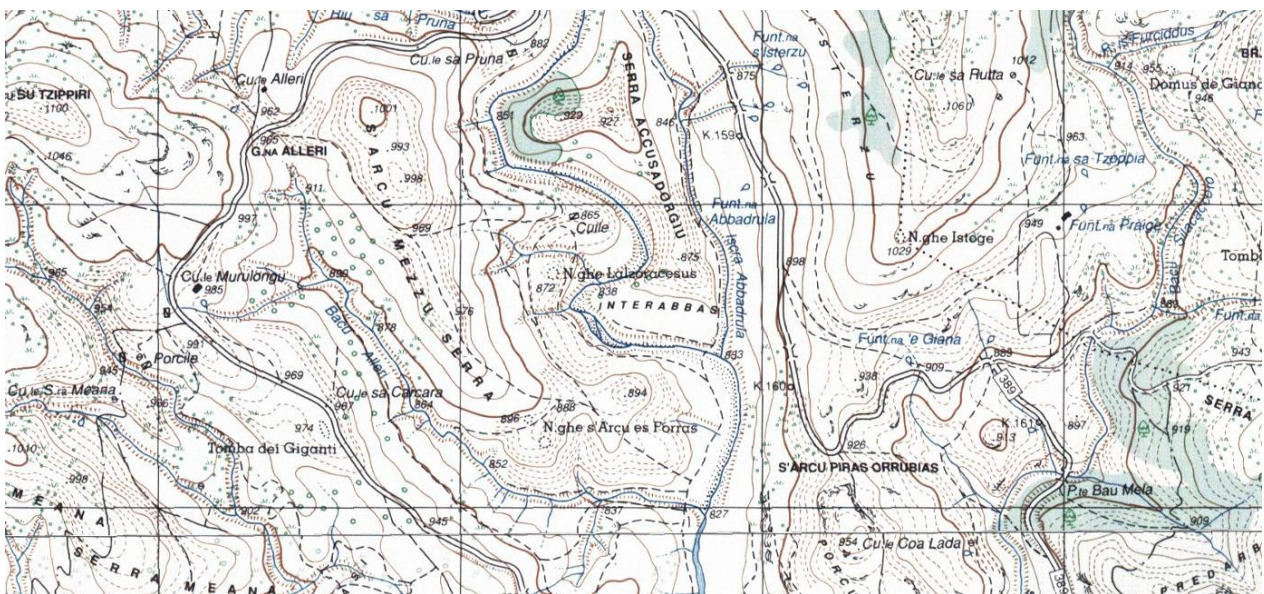


## ■ The landscape of the Rio Interabbas valley between the Recent Bronze Age and the Iron Age

In the valley below the Correboi pass, an area known topographically as Interabbas (fig. 1), naturally surrounded by two rivers that are tributaries of the Rio Flumendosa, there is an archaeological complex (15th-9th century B.C.) that includes the sanctuary village, the Nuragic tower ruins (fig. 2) and a giants' tomb (fig. 3), made from large local granite blocks, indicators of the relationship between man and territory, based on an economy that was linked to the use of high pastures.

The deterioration that can now be seen around the area of S'Arcu 'e Is Forros, is undoubtedly anthropic and must be identified in the cut, the practice of fires and the irrational use of land as wild pastures.

The landscape is connected to the various visible components that make up this portion of territory a granite, geomorphological structure, vegetation and the remains of Nuragic monuments.



**Fig. 1** - Map picture (from Map IGM 1:25000, sheet 517 section III Talana).

The hierarchy of the settlements, the control and exploitation strategies, the collective worship practices, all define this landscape as a ritual, from visible, long-lasting monuments from remote proto-historic era.

Man created sacred spaces in this territory, as sanctuaries, placed in strategically key places that were also important from a political point of view.

With reference to archaeological data, the documentary picture is selective and only fragmented. The Nuraghi remains (fig. 2) and the giants' tomb (fig. 3), precious archaeological clues, allows us to see a possible site of stable visiting for people who travelled along the transhumance paths.



**Fig. 2** - Nuraghe Lalzoracesus or Lotzoracesa

(da <http://wikimapia.org/#lang=it&lat=40.006563&lon=9.401411&z=18&m=b&show=/2505670/it/Nuraghe-Lotzoracesu/photo/3102742>).



**Fig. 3** - Giants' tomb at the Lalzoracesus or Lotzoracesa Nuraghi  
(from <http://wikimapia.org/#lang=it&lat=40.006563&lon=9.401411&z=18&m=b&show=/2505670/it/Nuraghe-Lotzoracesu/photo/3102737>).

## ■ Credits

Deepening card edited by Dr. Emanuela Atzeni





UNIONE EUROPEA



REPUBBLICA ITALIANA



**REGIONE AUTÒNOMA DE SARDIGNA**  
**REGIONE AUTONOMA DELLA SARDEGNA**

## La Sardegna cresce con l'Europa



UNIONE EUROPEA

Progetto cofinanziato dall'Unione Europea  
Programma Operativo FESR 2007-2013

FESR - Fondo Europeo di Sviluppo Regionale - Asse I, Linea di Attività 1.2.3.a