



UNIONE EUROPEA



REPUBBLICA ITALIANA



REGIONE AUTÒNOMA DE SARDIGNA
REGIONE AUTONOMA DELLA SARDEGNA

Port and coastal towers of Arbatax

Patrimonio culturale
SARDEGNA Virtual Archaeology



■ Anforotto (small amphora) (V-VI A.D.)

The Arbatax sea has returned and keeps on returning evidence of the past. Including the amphorae¹ representing one of the most frequent finds.

The 47 cm high *anforotto*, with a high, cylindrical neck and short handles connecting the top of the shoulder with the lower part of the neck comes from the Arbatax sea. Other similar *anforotti*, probably from the same wreck, but recovered at different times, are kept in the Museum of Villasimius. The example can be compared with some similar containers produced in Sicily.



Fig. 1 - Anforotto, from the sea at Arbatax (from SALVI ET ALII 2005, p. 89).

¹ The term “amphora” indicates a tapered or globular terracotta container with two handles, used in ancient times to transport liquids (wine, oil) or solid foods (wheat or other cereals).



Fig. 2 - Anforotto, Archaeological Museum of Villasimius (photo foto E. Atzeni).

A large quantity of pottery comes from an Islamic wreck from the X century A.D. found in the water off Cannes, at a depth of 58 m; this includes *jarritas* (fig. 3) which, for the high neck, recall the *anforotto* in question.

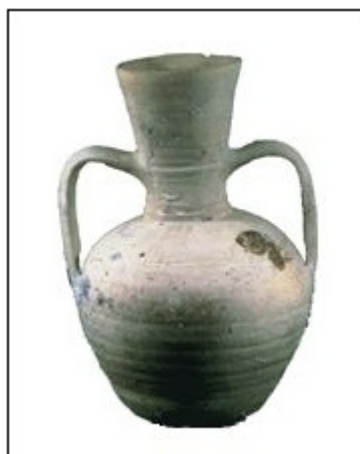


Fig. 3 - *Jarrita* from the wreck of Bateguier (from SANNA, SORO 2013, Tav. II, 4).

■ Credits

Deepening card edited by Dr. Maria Grazia Arru

■ Bibliography

BELTRAN LLORIS 1970 = M. BELTRAN LLORIS, *Las anforas romanas en Espana*, Zaragoza 1970, pag. 436, fig. 172, 3.

CARAVALE, TOFFOLETTI 1998 = A. CARAVALE, I. TOFFOLETTI, *Anfore antiche. Conoscerle e identificarle*, Atripalda 1998, p. 128.

SALVI ET ALII 2005 = D. SALVI, P. BERNARDINI, M.R. MANUNTZA, G. GASPERETTI, (a cura di L. PUTZU, E. GAUDINA), *Tesori riscoperti dalla terra e dal mare: la Guardia di Finanza in Sardegna*, Cagliari 2005, p. 89.

SANNA, SORO 2013 = I. SANNA, L. SORO, *Nel mare della Sardegna centro meridionale tra 700 e 1100 d.C. Un contributo dalla ricerca archeologica subacquea*, in *Settecento-Millecento. Storia, archeologia e arte nei secoli bui del Mediterraneo. Atti del Convegno (Cagliari 17-19 ottobre 2012)*, II, pp. 761-798.





UNIONE EUROPEA



REPUBBLICA ITALIANA



REGIONE AUTÒNOMA DE SARDIGNA
REGIONE AUTONOMA DELLA SARDEGNA

La Sardegna cresce con l'Europa



UNIONE EUROPEA

Progetto cofinanziato dall'Unione Europea
Programma Operativo FESR 2007-2013

FESR - Fondo Europeo di Sviluppo Regionale - Asse I, Linea di Attività 1.2.3.a