



UNIONE EUROPEA



REPUBBLICA ITALIANA



REGIONE AUTÒNOMA DE SARDIGNA  
REGIONE AUTONOMA DELLA SARDEGNA

# Port and coastal towers of Arbatax

Patrimonio culturale  
**SARDEGNA** Virtual Archaeology



## ■ Amphora Spatheion (Keay XXVI) (date uncertain)

The Arbatax sea has returned and keeps on returning evidence of the past. Including the amphorae<sup>1</sup> representing one of the most frequent finds.

Found by the Lieutenancy of Arbatax in 1992, 108 cm high, diameter 16.8; circumference 53 cm. It has an elongated, slim, cylindrical body, pronounced neck with the handles flanking it, thickened, rounded rim (fig. 1). Dates are not certain, but this type was widespread from the IV to the VII century A.D. in the Mediterranean and eastern, central and northern Europe. It was used to transport oil, olives, fish preserves, wine.



**Fig. 1** - Spatheion from the Arbatax sea (from SALVI ET ALII 2005, p. 86).

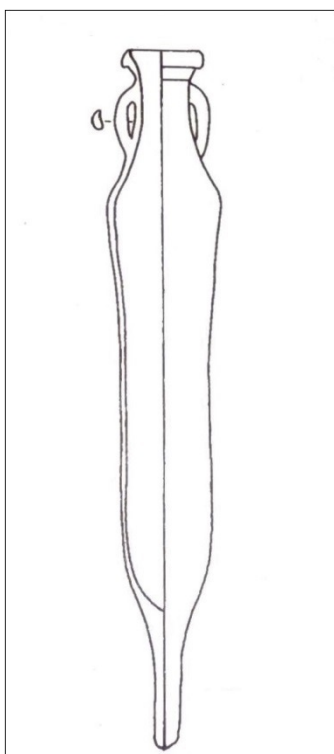
---

<sup>1</sup> The term “amphora” indicates a tapered or globular terracotta container with two handles, used in ancient times to transport liquids (wine, oil) or solid foods (wheat or other cereals).

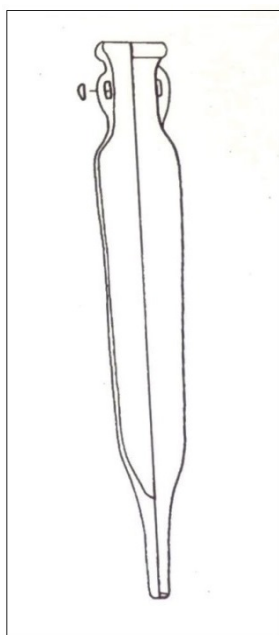


**Fig. 2** - Spatheion, Museo Nacional de Arqueología Marítima, Cartagena (da [http://archaeologydataservice.ac.uk/archives/view/amphora\\_ahrb\\_2005/zoom.cfm?id=289&img=PEC311&CFID=53918&CFTOKEN=1E0239C2-B493-4C48-AB6AC779E10D52E4](http://archaeologydataservice.ac.uk/archives/view/amphora_ahrb_2005/zoom.cfm?id=289&img=PEC311&CFID=53918&CFTOKEN=1E0239C2-B493-4C48-AB6AC779E10D52E4)).





**Fig. 3** - Esempio di *spatheion* (da CARVALE, TOFFOLETTI 1998, p. 147).



**Fig. 4** - Esempio di *spatheion* (da CARVALE, TOFFOLETTI 1998, p. 147).



## ■ Credits

Deepening card edited by Dr. Maria Grazia Arru

## ■ Bibliography

**CARVALE, TOFFOLETTI 1998** = A. CARVALE, I. TOFFOLETTI, *Anfore antiche. Conoscerle e identificarle*, Atripalda 1998, p. 147.

**SALVI ET ALII 2005** = D. SALVI, P. BERNARDINI, M.R. MANUNTZA, G. GASPERETTI, (a cura di L. PUTZU, E. GAUDINA), *Tesori riscoperti dalla terra e dal mare: la Guardia di Finanza in Sardegna*, Cagliari 2005, p. 86.

**KEAY 1984** = S.J. KEAY, *Late Roman Amphorae in the Western Mediterranean. A Typology and Economic Study: The Catalan Evidence*, BAR International Series 196, I, Oxford 1984, p. 212.





UNIONE EUROPEA



REPUBBLICA ITALIANA



**REGIONE AUTÒNOMA DE SARDIGNA**  
**REGIONE AUTONOMA DELLA SARDEGNA**

## La Sardegna cresce con l'Europa



UNIONE EUROPEA

Progetto cofinanziato dall'Unione Europea  
Programma Operativo FESR 2007-2013

FESR - Fondo Europeo di Sviluppo Regionale - Asse I, Linea di Attività 1.2.3.a