



UNIONE EUROPEA



REPUBBLICA ITALIANA



REGIONE AUTÒNOMA DE SARDIGNA  
REGIONE AUTONOMA DELLA SARDEGNA

# Port and coastal towers of Arbatax

Patrimonio culturale  
**SARDEGNA** Virtual Archaeology



## ■ Amphora Almagro 51 (Keay XXIII / Lusitana IV) (end of III-IV century A.D.)

The Arbatax sea has returned and keeps on returning evidence of the past. Including the amphorae<sup>1</sup> representing one of the most frequent finds.

Found by the Lieutenancy of Arbatax in 1992, this amphora has a cordiform body (fig. 1), is 49 cm high and 84 cm in diameter. It has a narrow neck, wide flared mouth, handles joining the maximum narrow point on the neck with the median part of the shoulder. A short full tip closes the lower part.

This type of container, produced in Lusitania<sup>2</sup>, is certified as from the III century B.C. until the middle of the V, especially in the western Mediterranean. It was used to trade fish preserves (figs. 2-4).

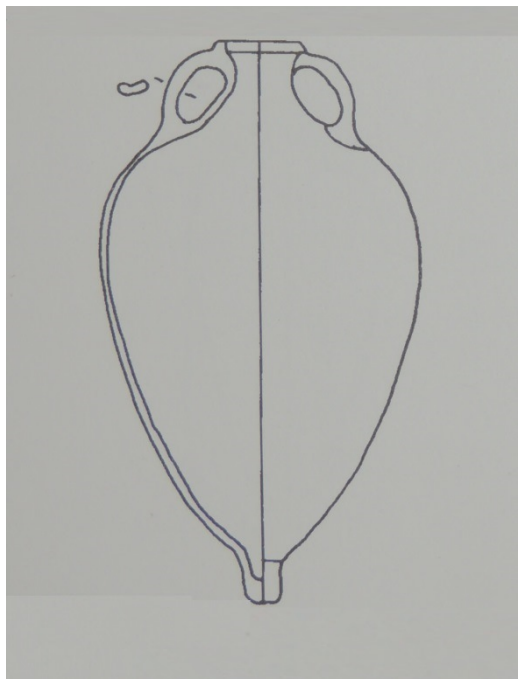
---

<sup>1</sup> The term “amphora” indicates a tapered or globular terracotta container with two handles, used in ancient times to transport liquids (wine, oil) or solid foods (wheat or other cereals).

<sup>2</sup> Ancient Lusitania, in the Iberian peninsula, corresponds to today's central and southern Portugal plus a part of the inland Spanish plateau (today's Extremadura).

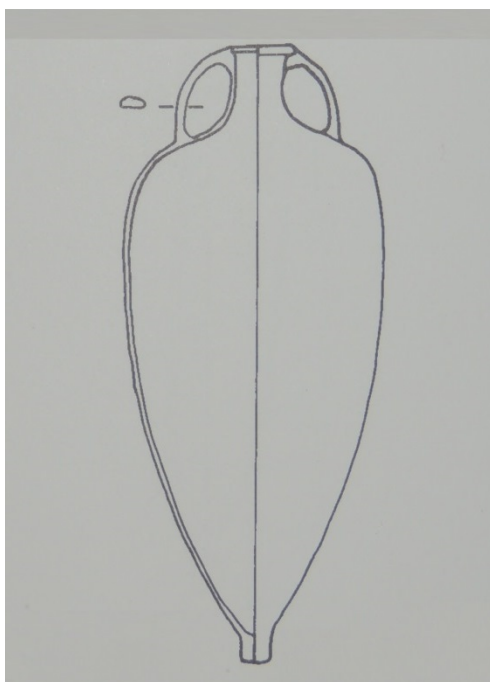


**Fig. 1** - Amphora with condiform body, from Arbatax (from SALVI ET ALII 2005, p. 82).

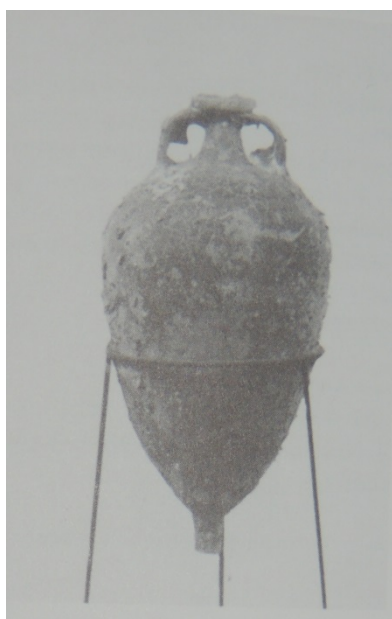


**Fig. 2** - Amphora Almagro 51 c (from CARVALE, TOFFOLETTI 1998, p. 138).





**Fig. 3** - Amphora Almagro 51 c (from CARVALE, TOFFOLETTI 1998, p. 138).



**Fig. 4** - Amphora Almagro 51 c (da CARVALE, TOFFOLETTI 1998, p. 138).



## ■ Credits

Deepening card edited by Dr. Maria Grazia Arru

## ■ Bibliography

**BELTRAN LLORIS 1970** = M. BELTRAN LLORIS, *Las anforas romanas en Espana*, Zaragoza 1970.

**CARVALE, TOFFOLETTI 1998** = A. CARVALE, I. TOFFOLETTI, *Anfore antiche. Conoscerle e identificarle*, Atripalda 1998, p. 128.

**FABIÃO 2008** = C. FABIÃO, *Las ánforas de Lusitania, Cerámicas hispanoromanas. Un estado de la cuestión*, In D. BERNAL Y A. RIBERA LACOMBA (a cura di), *Actas del XXVI Congreso Internacional de la Asociación Rei Cretariae Romanae Fautores*, 2008; pp. 725-745, p. 740.

**KEAY 1984** = S.J. KEAY, *Late Roman Amphorae in the Western Mediterranean. A Typology and Economic Study: The Catalan Evidence*, *BAR International Series* 196, I, Oxford 1984, p. 82.

**SALVI ET ALII 2005** = D. SALVI, P. BERNARDINI, M.R. MANUNTZA, G. GASPERETTI, (a cura di L. PUTZU, E. GAUDINA), *Tesori riscoperti dalla terra e dal mare: la Guardia di Finanza in Sardegna*, Cagliari 2005, p. 82.



UNIONE EUROPEA



REPUBBLICA ITALIANA



**REGIONE AUTÒNOMA DE SARDIGNA**  
**REGIONE AUTONOMA DELLA SARDEGNA**

## La Sardegna cresce con l'Europa



UNIONE EUROPEA

Progetto cofinanziato dall'Unione Europea  
Programma Operativo FESR 2007-2013

FESR - Fondo Europeo di Sviluppo Regionale - Asse I, Linea di Attività 1.2.3.a