



UNIONE EUROPEA



REPUBBLICA ITALIANA



REGIONE AUTÒNOMA DE SARDIGNA
REGIONE AUTONOMA DELLA SARDEGNA

Palace of Baldu

Patrimonio culturale
SARDEGNA Virtual Archaeology



■ The territory of Luogosanto during Prehistoric Times

The territory of Luogosanto has been characterised by the presence of man from prehistoric times, documented from at least the recent Neolithic (fourth millennium BC) to the Chalcolithic (end of IV-III millennium BC) through funerary and ritual structures such as the megalithic circles of Li Casalini, Monchessa, Vigna of Petra and San Salvatore Balaiana. These complexes had two concentric rows of vertical slabs fixed into the ground, bordering a central space of between 4 and 8 metres: a stone tomb may have been placed there if it was a burial site, as for example in S. Salvatore di Balaiana; or this area was left empty to allow the ritual of the flesh being stripped from the skeleton before the separated bones were placed in the tomb (secondary inhumation). The *allée couvertes* of Taerra-Monti and probably others also refer to this period.

Four nuraghe are from the Nuragic period, however (1700-900 B.C.): Monte Pizzari, Chiramaria, Monte Ruju (fig. 1) and one without a name in the area of Stazzi Naracheddu (fig. 2).



Fig. 1 - Nuraghe on Monte Ruju (from <http://wikimapia.org/15508906/Nuraghe-Monti-Ruju#/photo/1148838>).

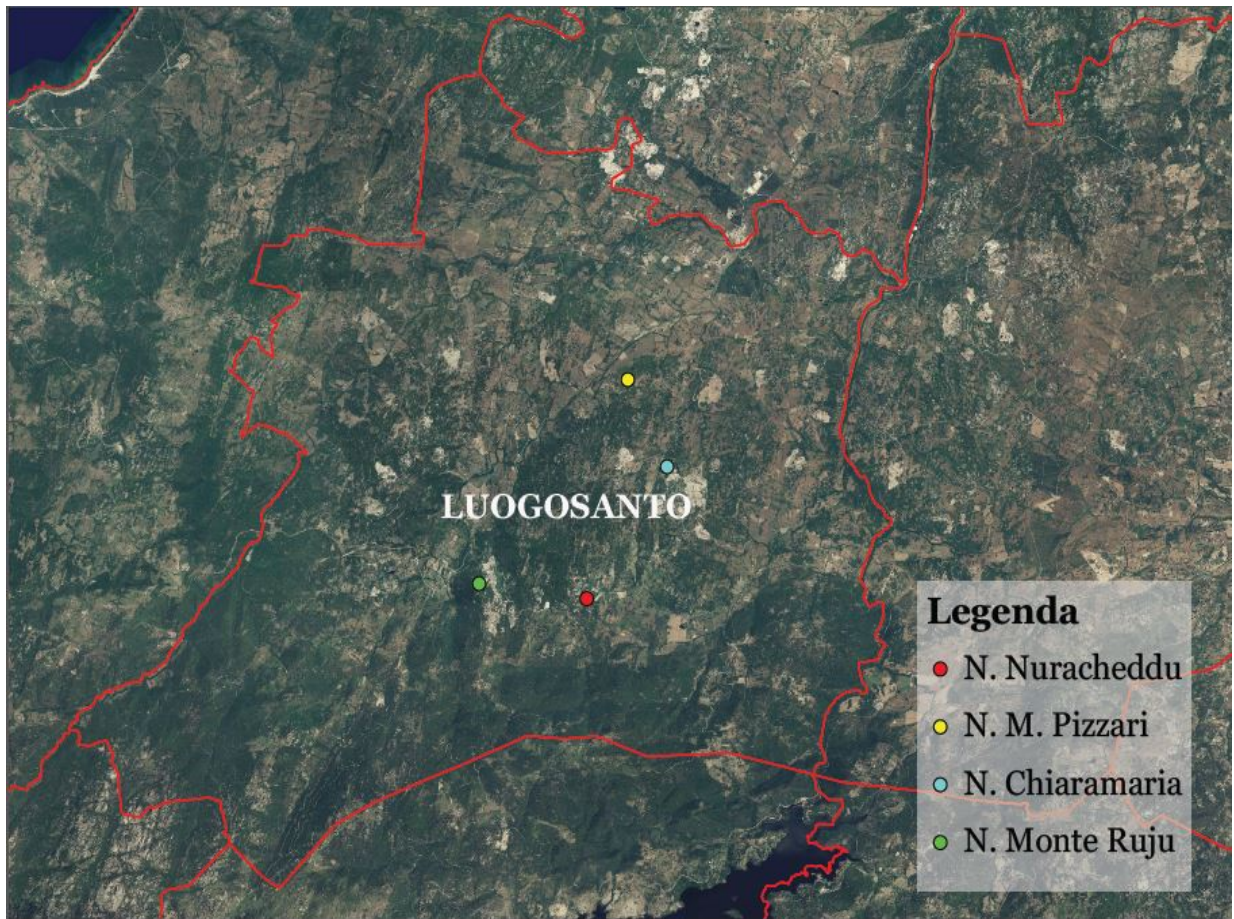


Fig. 2 - Distribution of the Nuraghe in the territory of Luogosanto (Graphic reconstruction by F. Collu).

The villages with a variable number of huts are linked to these megalithic fortresses: a couple of the most interesting are the ones in Stazzi Naracheddu and in Monti Ruju. The latter underwent an archaeological dig, that brought to light an area identified as a meeting hut (fig. 3).





Fig. 3 - Nuragic Village on M. Ruju, meeting hut (from Antona 2004-2005, p. 77).

The typical tomb type of that era is the giants' tomb, which appears to be documented in the territory of Luogosanto such as for example Montiggiu de Lu Paladinu near Chivoni - Stazzo (Farmhouse) Pruncilvunu.

Inhumation burials inside tafoni have been identified in the area of Balaiana and a bronze statue with a horned helmet and dagger with the hilt on his chest was also found here (VIII-VII century BC).

■ Credits

Deepening card edited by Dr. Claudia Cocco and Dr. Francesca Collu

■ Bibliographic abbreviations

- ANTONA 2004-2005 A. ANTONA, *Il villaggio nuragico delle tre cime*, in *Almanacco Gallurese*, 12, 2004-2005, pp. 71-78.
- Archeologia del territorio* R. CAPRARA, A. LUCIANO, G. MACIOCCO (a cura di), *Archeologia del territorio. Territorio dell'archeologia. Un sistema informativo territoriale orientato sull'archeologia della regione ambientale Gallura*, Sassari 1996.
- FERRARESE CERRUTI 1969 M. FERRARESE CERRUTI, *Dalla preistoria ai romani*, in *Luogosanto*, pp. 19-22.
- IIPP 2009 *Atti della XLIV riunione scientifica. La preistoria e la protostoria della Sardegna* (Cagliari, Barumini, Sassari 23-28 novembre 2009), I, Firenze 2009.
- LO SCHIAVO 1996 F. LO SCHIAVO, *Bronzi di età nuragica dalla Gallura*, in *Archeologia del territorio*, pp. 65-96.
- LILLIU 2003 G. LILLIU, *La civiltà dei Sardi: dal Paleolitico all'età dei nuraghi*, Nuoro 2003.
- Luogosanto* AA. VV., *Luogosanto. Storia e vita*, Sassari 1969.

- MASIA 1996 M. A. MASIA, *Distribuzione delle tipologie dei nuraghi nel territorio* in *Archeologia del territorio*, pp. 50-54.
- OGGIANO 1996 G. M. OGGIANO, *L'architettura funeraria nuragica in Gallura*, in *Archeologia del territorio*, pp. 55-58.
- TANDA 2009 G. TANDA, *Il Neolitico recente*, in IIPP 2009, pp. 59-78.

■ Periodicals and magazines

Almanacco Gallurese *Almanacco gallurese*, Tempio Pausania, I, 1992 e ss.



UNIONE EUROPEA



REPUBBLICA ITALIANA



REGIONE AUTÒNOMA DE SARDIGNA
REGIONE AUTONOMA DELLA SARDEGNA

La Sardegna cresce con l'Europa



UNIONE EUROPEA

Progetto cofinanziato dall'Unione Europea
Programma Operativo FESR 2007-2013

FESR - Fondo Europeo di Sviluppo Regionale - Asse I, Linea di Attività 1.2.3.a