

# Palace of Baldu

Patrimonio culturale  
**SARDEGNA** Virtual Archaeology

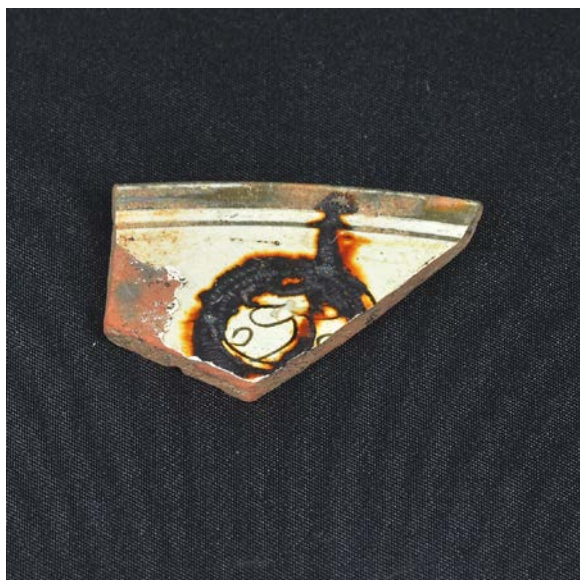




## ■ *Zeuxippus Ware*

Rare and precious ceramic fragments have been unearthed from inside the Palace of Baldu and its ruins, produced in Turkish-Islamic areas.

One of the most precious items in the tower is a *Zeuxippus Ware bowl* (figs. 1-2), produced between the end of the 12th and the 13th century A.D. During digs, a fragment of rim was found that shows a decoration scratched with the stick to create a deep groove just below the edge, with a dark green line, and a "stylised palm tree with two concentric circles inside".



**Fig. 1** - Luogosanto, Palace of Baldu: fragment of *Zeuxippus Ware* (inner surface)  
(photo by Unicity S.p.A.).



**Fig. 2** - Luogosanto, Palace of Baldu: fragment of *Zeuxippus Ware* (external surface)  
(photo by Unicity S.p.A.).

The characteristics of this item allow it to be included in class II, identified by A.H.S. Megaw in 1968; this group has a dark green band as decoration, obtained by removing the white slipware that covers the inner surface of the vase. The glaze was spread on top that is usually cream, while in some points, different colours can be seen.

This type of ceramics was produced in the Aegean and Greek towns (fig. 3) in spite of the fact that the first producer was Constantinople and surrounding areas.



**Fig. 3** - Greece, Ilion: fragment (front and back) of *Zeuxippus Ware* (from <http://classics.uc.edu/troy/grbpottery/html/byz-glazed.html>).

These specimens reached Sardinia on Pisan or Genoan merchant ships, but currently findings in the Island are still very rare (fig. 4).



**Fig. 4** - Geridu, medieval village: fragment of an engraved *Zeuxippus Ware* bowl  
(from Milanese, Biccone 2008, p. 136, fig. 7).

Chronology has been determined by ceramic basins used as decorations in the facades of some churches in Pisa, in particular those of Santo Stefano extra Moenia and San Michele degli Scalzi. Because of the high value and the sophistication of this pottery, its presence inside the Palace of Baldu clarifies the high social status of those who spent short or long periods in the tower.



## ■ Credits

Deepening card edited by Dr. Claudia Cocco and Dr. Francesca Collu

## ■ Bibliographic abbreviations

- Albisola XL*      *Atti del XL Convegno internazionale della ceramica: Italia, medio ed estremo oriente: commerci, trasferimenti di tecnologie e influenze decorative tra basso medioevo ed età moderna* (Savona-Albisola Marina, 11-12 maggio 2007), Firenze 2008.
- BERTI,    TONGIORGI    G. BERTI, L. TONGIORGI, *I bacini ceramici medievali delle chiese di Pisa*, Roma 1981.
- CASSON *et al.* 1928    S. CASSON, T. RICE, G. F. HUDSON, A. H. M. JONES, *Preliminary Report upon the excavation carried out in the Hippodrome of Constantinople in 1927 on behalf of the British Academy*, Oxford 1928.
- MEGAW 1968      A. H. S. MEGAW, *Zeuxippus Ware*, in *ABSA*, 63, 1968, pp. 67-68.
- MILANESE, BICCONE 2008    M. MILANESE, L. BICCONE, *Le ceramiche dal Mediterraneo orientale in Sardegna*, in *Albisola XL*, pp. 129-136.
- MILELLA 1989      M. MILELLA, *Ceramica e vie di comunicazione nell'Italia bizantina*, in  
MEFRM, T. 101, n. 2. 1989. pp. 533-557.
- PINNA,    CORDA    a    F. PINNA, D. CORDA, *Scambi e circuiti commerciali nella Sardegna medievale: dati archeologici dal Palazzo di Baldu (Luogosanto, Olbia-Tempio)*, in *B.S.S.H.N.C.*, 2014, pp. 748-749.
- Rassegna stampa*    *Logudoro. Prima campagna archeologica nel villaggio abbandonato di Bisarcio*, in *Unione Sarda*, 4 ottobre 2012.

## ■ Periodicals and magazines

- ABSA** *The Annual of British School at Athens*, Athens-London, I, 1894 e ss.
- B.S.S.H.N.C** *Bulletin de la Société des sciences historiques et naturelles de la Corse*, Bastia, I, 1881 e ss.
- MEFRM** *Mélanges de l'École française de Rome. Moyen Âge*, Rome-Paris, I, 1989 e ss.





UNIONE EUROPEA



REPUBBLICA ITALIANA



**REGIONE AUTÒNOMA DE SARDIGNA**  
**REGIONE AUTONOMA DELLA SARDEGNA**

## La Sardegna cresce con l'Europa



UNIONE EUROPEA

Progetto cofinanziato dall'Unione Europea  
Programma Operativo FESR 2007-2013

FESR - Fondo Europeo di Sviluppo Regionale - Asse I, Linea di Attività 1.2.3.a