



UNIONE EUROPEA



REPUBBLICA ITALIANA



REGIONE AUTÒNOMA DE SARDIGNA
REGIONE AUTONOMA DELLA SARDEGNA

Castle of Monreale

Patrimonio culturale
SARDEGNA Virtual Archaeology



■ The walls

The perimeter wall (fig. 1) that surrounded and defended the village was fortified by eight (or perhaps nine) square and semi-circular towers¹ (fig. 2); slightly sloping and made in schist blocks, placed in regular rows and bound with limestone mortar. This masonry, characterised by a thickness of about 2.40 metres, spread in a sub-pentagonal shaped perimeter of about 950 metres². On the west side, facing the town of San Gavino, there was the door called de Santu Baingiu (fig. 3). On the north-east side, about 120 metres long, there was a second entrance to the village, named gate of Sardara (fig. 4)³.

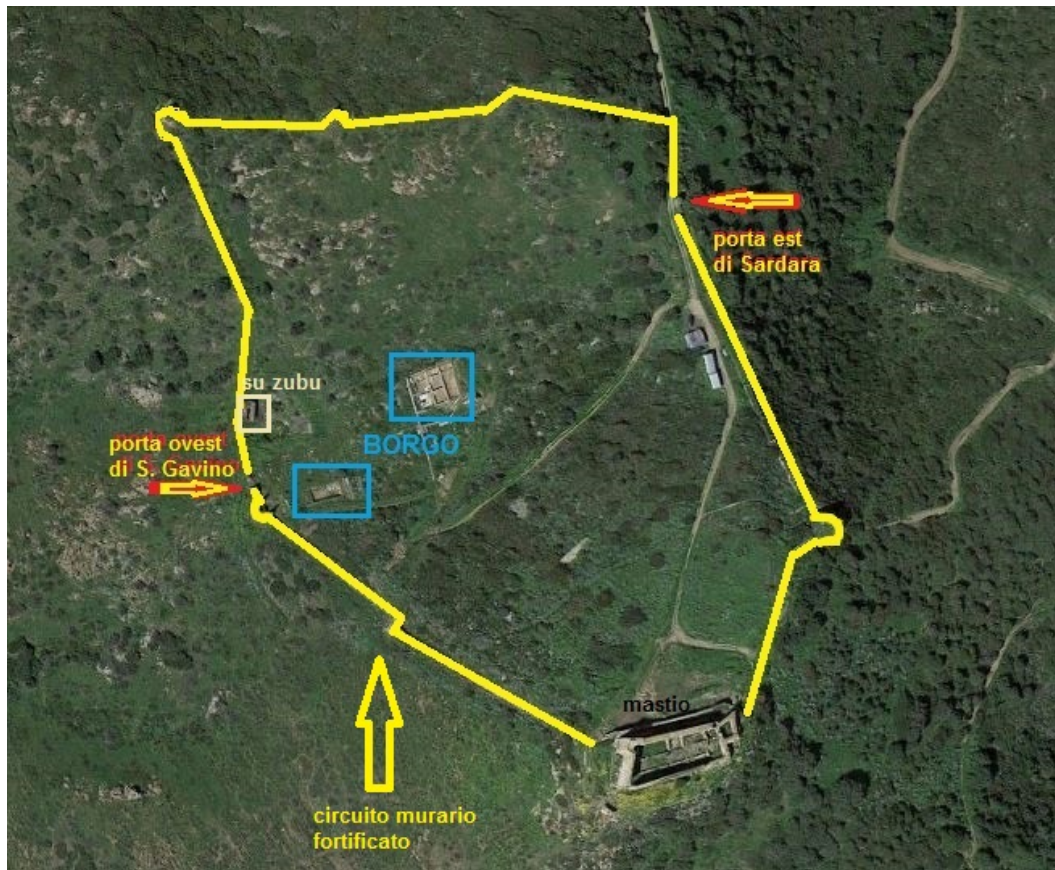


Fig. 1 - The outer walls of the fortified complex of Monreale (reconstruction by M. G. Arru, from Google Earth).

¹ CORONEO 1993, sheet 175.

² UCCHEDDU 2007, p. 185.

³ STASOLLA 2010, p. 42.

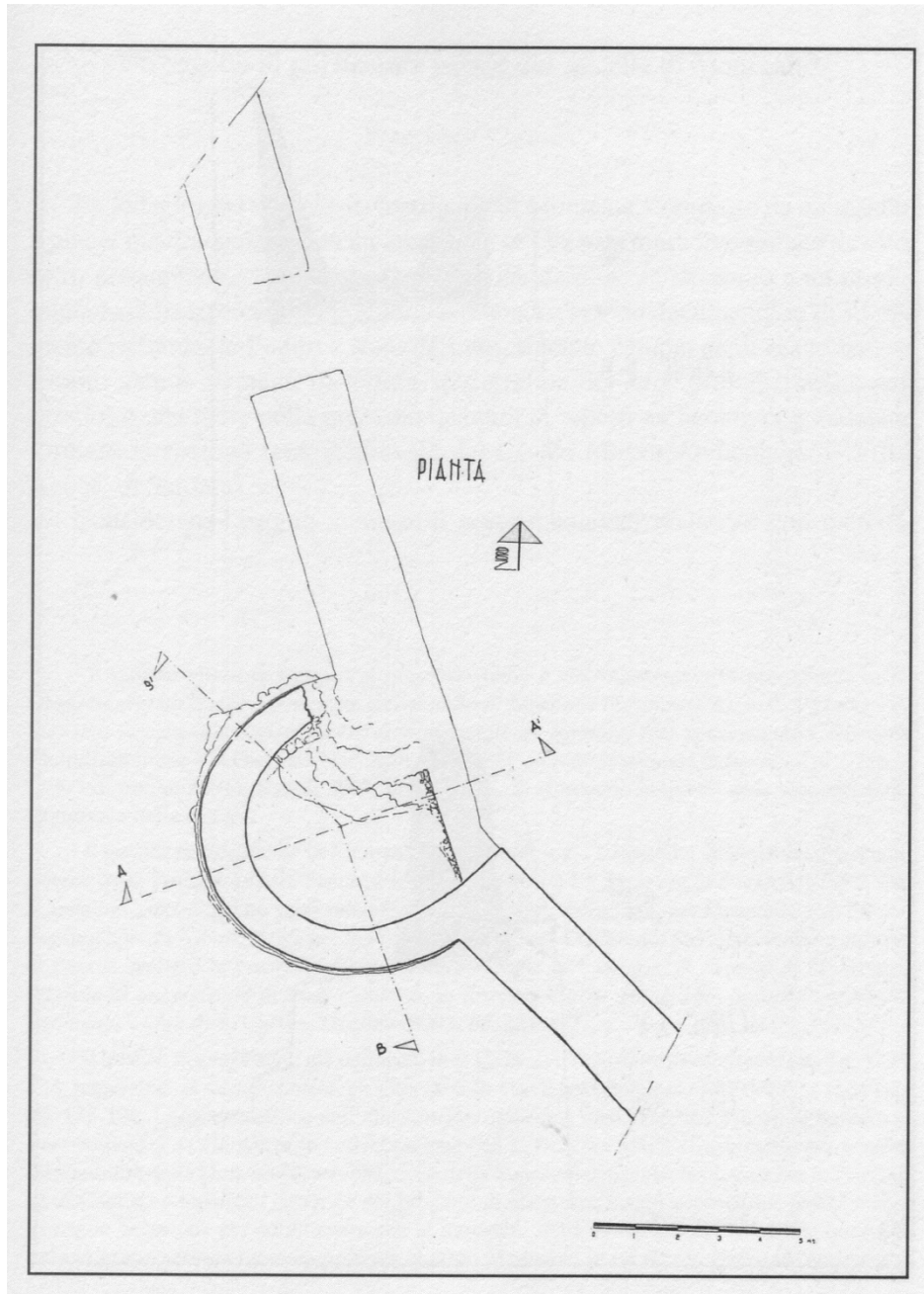


Fig. 2 - Plan of the C semi-circular tower (from UCCHEDDU 2004, p. 239).

The village was crossed by the main road, *sa ruga manna*⁴, which cut lengthwise through the town and united the two accesses on the eastern and western sides of the fortified walls⁵.

⁴ ANGIUS 1853.

⁵ STASOLLA 2010, p. 43.



Fig. 3 - The West gate called of San Gavino or "de Santu Baingiu" (photo by R. Bordicchia).



Fig. 4 - The East gate called "of Sardara" (photo by R. Bordicchia).

■ Credits

Deepening card edited by Dr. Maria Grazia Arru.

Preliminary research by Dr. Valeria Paretta and Dr. Daniele Corda.

■ Bibliography

STASOLLA 2010 = F. STASOLLA, *Per un'archeologia dei castelli in Sardegna: il castrum di Monreale a Sardara (VS)*, in *Temporis Signa*, V, 2010, pp. 39-54.

UCCHEDDU 2004 = G. UCCHEDDU, *Le strutture murarie del castello di Monreale (Sardara-VS): uno studio tipologico*, in V. GRIECO, *I catalani e il castelliere sardo. Atti degli incontri sui castelli in Sardegna (2003) dell'Arxiu de tradicions*, Oristano 2004, pp. 181-240.

CORONEO 1993 = R. CORONEO, *Architettura romanica dalla metà del Mille al primo '300*, Nuoro 1993, sch. 175.

ANGIUS 1853 = V. ANGIUS, s.v. *Sardara*, in *Dizionario geografico, storico, statistico, commerciale dagli Stati di S. M. il Re di Sardegna*, Torino 1853, vol. XVIII, pp. 893-907.





UNIONE EUROPEA



REPUBBLICA ITALIANA



REGIONE AUTÒNOMA DE SARDIGNA
REGIONE AUTONOMA DELLA SARDEGNA

La Sardegna cresce con l'Europa



UNIONE EUROPEA

Progetto cofinanziato dall'Unione Europea
Programma Operativo FESR 2007-2013

FESR - Fondo Europeo di Sviluppo Regionale - Asse I, Linea di Attività 1.2.3.a