



UNIONE EUROPEA



REPUBBLICA ITALIANA



REGIONE AUTÒNOMA DE SARDIGNA
REGIONE AUTONOMA DELLA SARDEGNA

The Castle della Fava

Patrimonio culturale
SARDEGNA Virtual Archaeology



■ Goblets (Phoenician Age)

Among the pottery items found in Posada during the archaeological investigations, there were some beakers, with carenated bottom (three examples) and with a curved bottom (a single fragment).

A first carenated beaker with a curved wall, indistinct rim and carenated (fig. 1); the outer surface has a light brown band decoration while on the inside, there are three concentric bands in the same colour. This items can be compared to one from *Sulky* (the modern-day S. Antioco) in Sardinia and can be dated between the second half of the 8th century B.C. and the first quarter of the 7th century B.C.

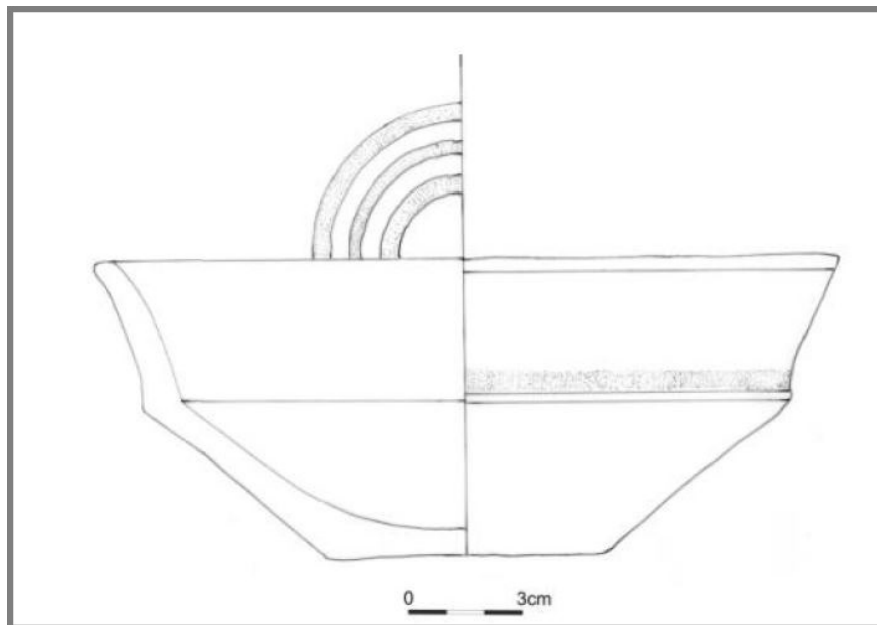


Fig. 1 - Carenated beaker from Posada (from Sanciu 2010, fig. 8).

A second example of carenated beaker is shown in a wall fragment with a slight part of the bottom, in red slip (fig. 2); this can be compared with contexts from Monte Sirai and can be dated to the 7th century B.C.

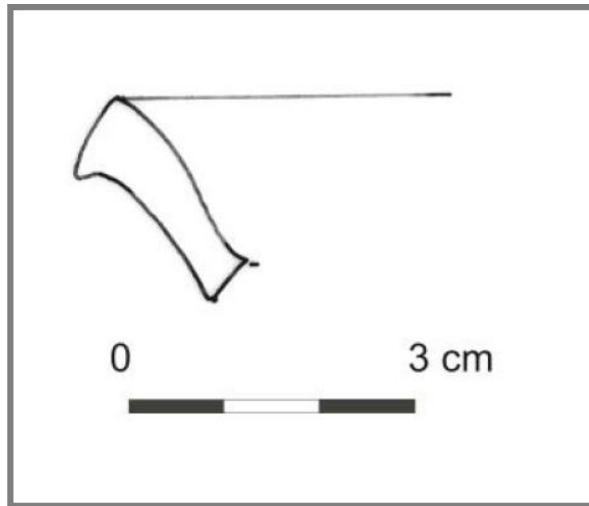


Fig. 2 - Fragment of a carenated beaker from Posada (from Sanciu 2010, fig. 9).

A last fragment of carenated cub is characterised by the strong bend in the wall (fig. 3); it can be compared to examples from *Sulky*, thanks to which it can be dated to the start of the 7th century B.C.

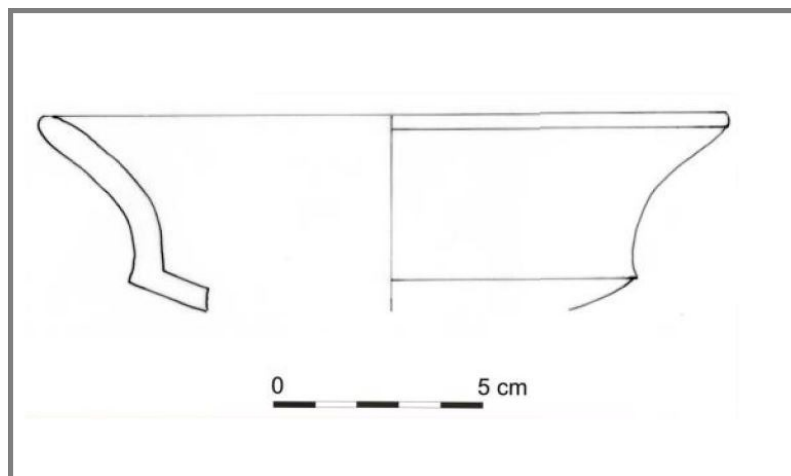


Fig. 3 - Hull-bottom beaker from Posada (from Sanciu 2010, fig. 10).

The only fragment of beaker with a curved profile has an orange stripe on the outer surface (fig. 4); it can be compared with examples from *Sulky* and Monte Sirai, dated between the end of the 8th century B.C. and the first half of the 7th century B.C.



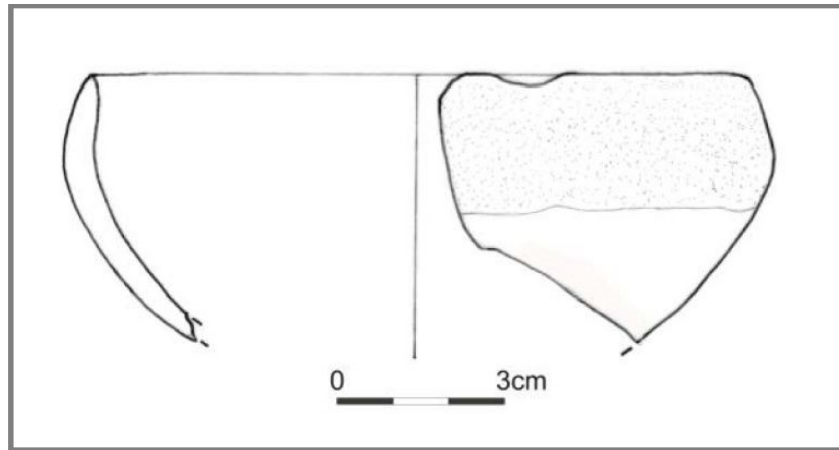


Fig. 4 - Hull-bottom beaker from Posada (from Sancier 2010, fig. 11).



■ Credits

Coordination Prof. Rossana Martorelli

Deepening card edited by Dr. Maria Grazia Arru and Dr. Enrico Dirminti

■ Bibliography

SANCIU 2010 = A. SANCIU, *Fenici lungo la costa orientale sarda. Nuove acquisizioni. Fasti On Line Documents & Research* 174, 2010.

SANCIU 2011a = A. SANCIU, *Nuove testimonianze di età punica da Posada e dalla Sardegna centro-orientale. Sardinia, Corsica et Baleares Antiquae*, IX, pp. 51-58.

SANCIU 2011b = A. SANCIU, *Posada. Centro storico. Recupero di materiali archeologici. Eren-tzias. Rivista della Soprintendenza per i Beni Archeologici per le province di Sassari e Nuoro*, I, pp. 376-377.

SANCIU 2012 = A. SANCIU, *Nuove testimonianze d'età fenicia e punica dalla costa centro-orientale sarda. ArcheoArte. Rivista elettronica di Archeologia e Arte*, Supplemento 2012 al numero 1, pp. 167-182.



UNIONE EUROPEA



REPUBBLICA ITALIANA



REGIONE AUTÒNOMA DE SARDIGNA
REGIONE AUTONOMA DELLA SARDEGNA

La Sardegna cresce con l'Europa



UNIONE EUROPEA

Progetto cofinanziato dall'Unione Europea
Programma Operativo FESR 2007-2013

FESR - Fondo Europeo di Sviluppo Regionale - Asse I, Linea di Attività 1.2.3.a