



UNIONE EUROPEA



REPUBBLICA ITALIANA



REGIONE AUTÒNOMA DE SARDIGNA
REGIONE AUTONOMA DELLA SARDEGNA

The Castle della Fava

Patrimonio culturale
SARDEGNA Virtual Archaeology



■ Bubbled globe earring

In 1984 a medieval necropolis was discovered a few hundred metres from the Castle della Fava, situated in *Part'e Sole*. The excavation revealed 17 graves (many of them of children), some were pit tombs and others were carved in stone, dating from the fourteenth and fifteenth centuries according to the elements which constituted the grave goods (fig. 1).

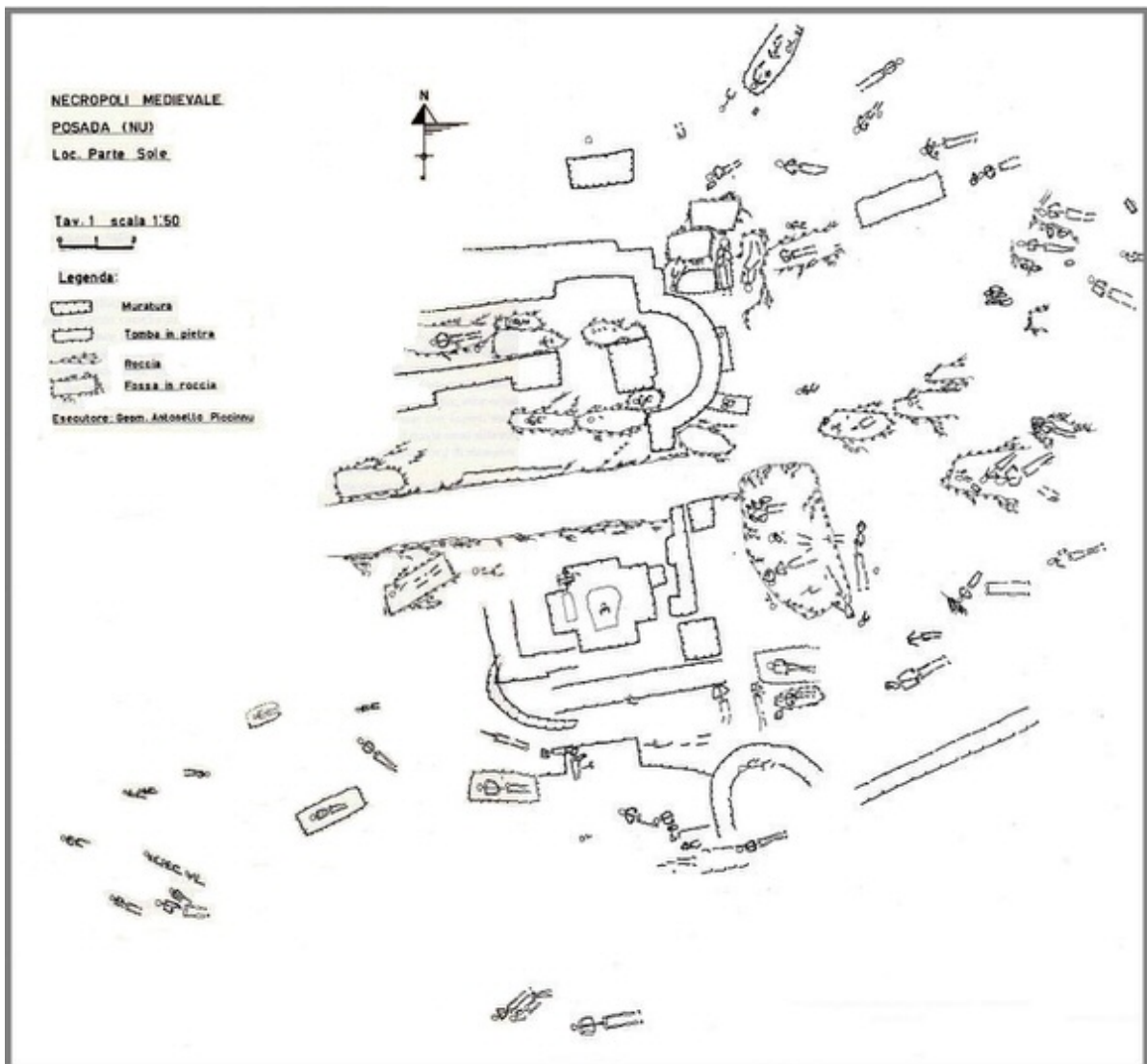


Fig. 1 - Necropolis of *Part'e Sole*, (Posada, NU) general plan of the site area (from D'ORIANO *et alii* 1989, fig. 41).

Since ancient times, the dead have been placed inside tombs together with their grave goods, which consisted of everyday objects (terracotta and glass vases, weapons, jewellery, coins), and which differed according to the era and social status of the deceased. Clothing items (belts, buckles) and devotional objects (tags, rosaries) are often found within Medieval Age burials. The bubbled globe earring found in *Part'e Sole* falls under the category of the artefacts used as ornamental elements and it proves the necropolis was already in use during the early Middle Ages. It is a globular element (fig. 2) with four diametrically opposite extremities; the holes in the globe originally were intended for the insertion of the elliptic ring of the earring, which is now lost. This small gem may be compared with the ones from the other island context of Cornus, where earrings found in the necropolis are similar to the one found in *Part'e Sole* (fig. 3).

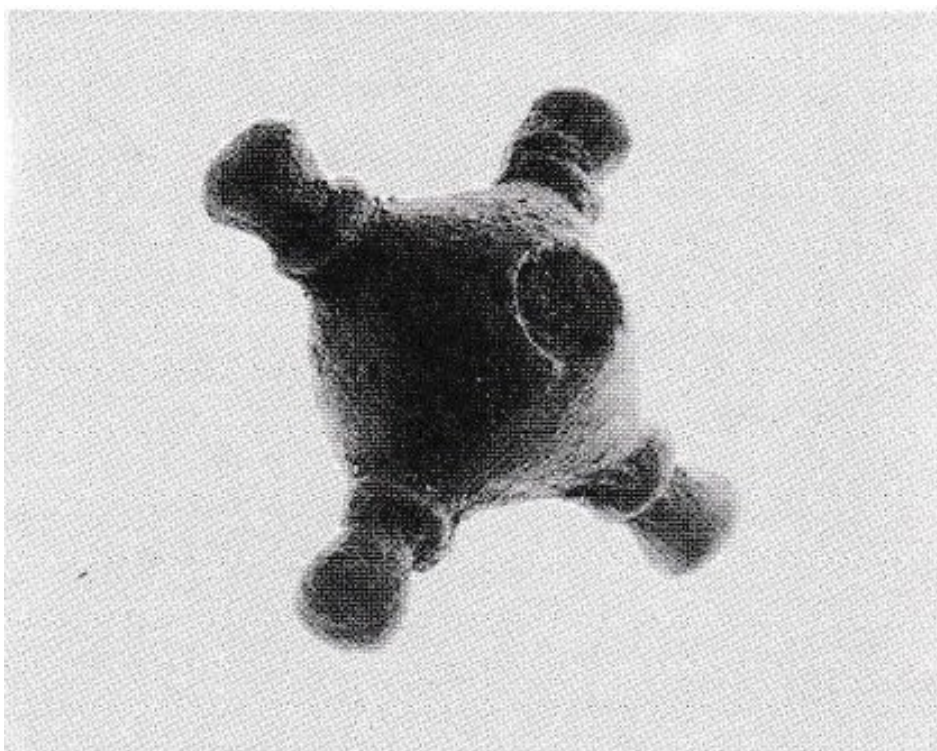


Fig. 2 - Bubbled globe earring from Posada (on the left) (from D'ORIANO et alii 1989, fig. 46).

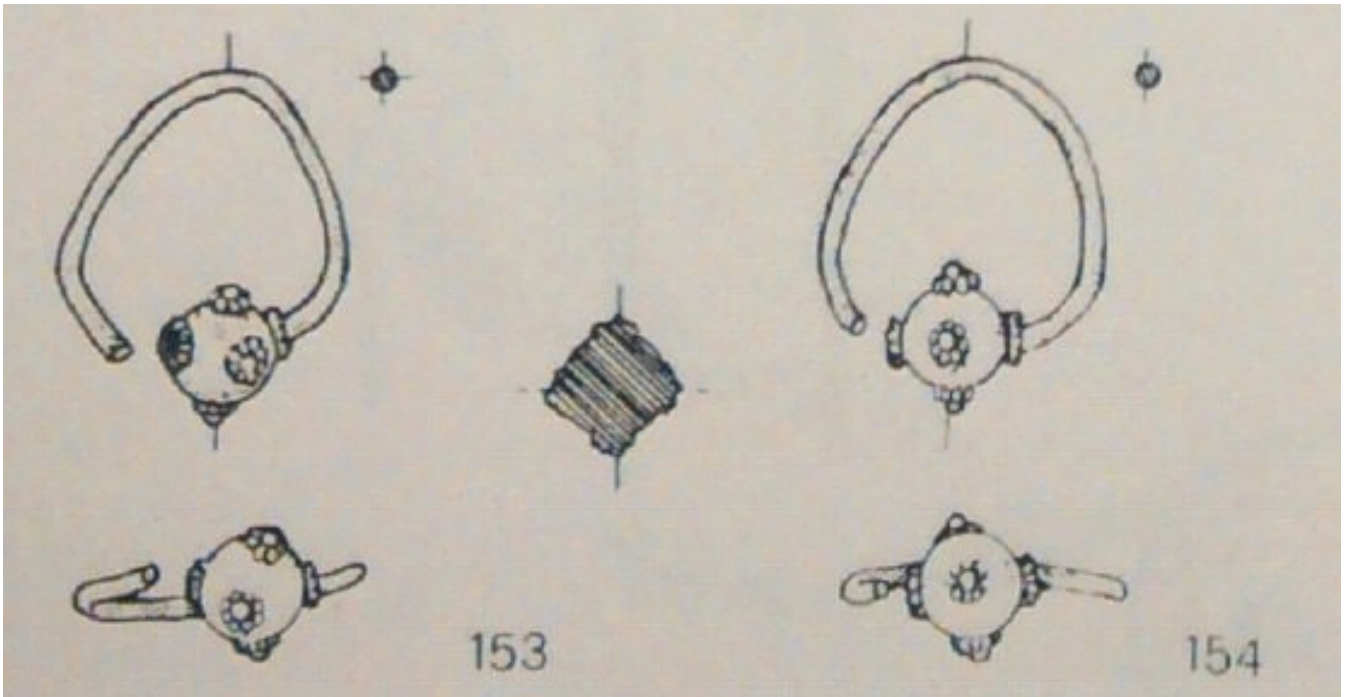


Fig. 3 - Earrings from the necropolis of Cornus (from MARTORELLI, AMANTE SIMONI 1986, table CV).



Fig. 4 - Bubbled globe earrings from Bortigali, necropolis of Berre, VII century AD.
(From GIOIELLI 2004, p. 32, fig. 44).

■ Credits

Coordination Prof. Rossana Martorelli

Deepening card edited by Dr. Maria Grazia Arru and Dr. Enrico Dirminti

■ Bibliography

D'ORIANO 1984 = R. D'ORIANO, *Posada (Nuoro): necropoli medievale nel centro dell'abitato. Nuovo Bullettino Archeologico Sardo* 1, pp. 382-383.

D'ORIANO *et alii* 1989 = R. D'ORIANO *et alii*, *Posada. Località Parte Sole, necropoli medievale, in Il Suburbio delle città in Sardegna: persistenze e trasformazioni. Atti del III convegno di studio sull'archeologia tardoromana e altomedievale in Sardegna (Cuglieri, 28-29 Giugno 1986). Mediterraneo tardoantico e medioevale. Scavi e ricerche* 7, Taranto 1989, pp. 51-58.

GIOIELLI 2004 = *Gioielli Storia, linguaggio, religiosità dell'ornamento in Sardegna*, Nuoro 2004.

MARTORELLI, AMANTE SIMONI 1986 = R. MARTORELLI, C. AMANTE SIMONI, *I corredi funerari e la suppellettile metallica, in L'archeologia romana e altomedievale nell'Oristanese. Atti del Convegno di Cuglieri (22-23 giugno 1984). Mediterraneo tardoantico e medioevale. Scavi e ricerche* 3, Taranto 1986, pp. 161-189.



UNIONE EUROPEA



REPUBBLICA ITALIANA



REGIONE AUTÒNOMA DE SARDIGNA
REGIONE AUTONOMA DELLA SARDEGNA

La Sardegna cresce con l'Europa



UNIONE EUROPEA

Progetto cofinanziato dall'Unione Europea
Programma Operativo FESR 2007-2013

FESR - Fondo Europeo di Sviluppo Regionale - Asse I, Linea di Attività 1.2.3.a