



UNIONE EUROPEA



REPUBBLICA ITALIANA



REGIONE AUTÒNOMA DE SARDIGNA  
REGIONE AUTONOMA DELLA SARDEGNA

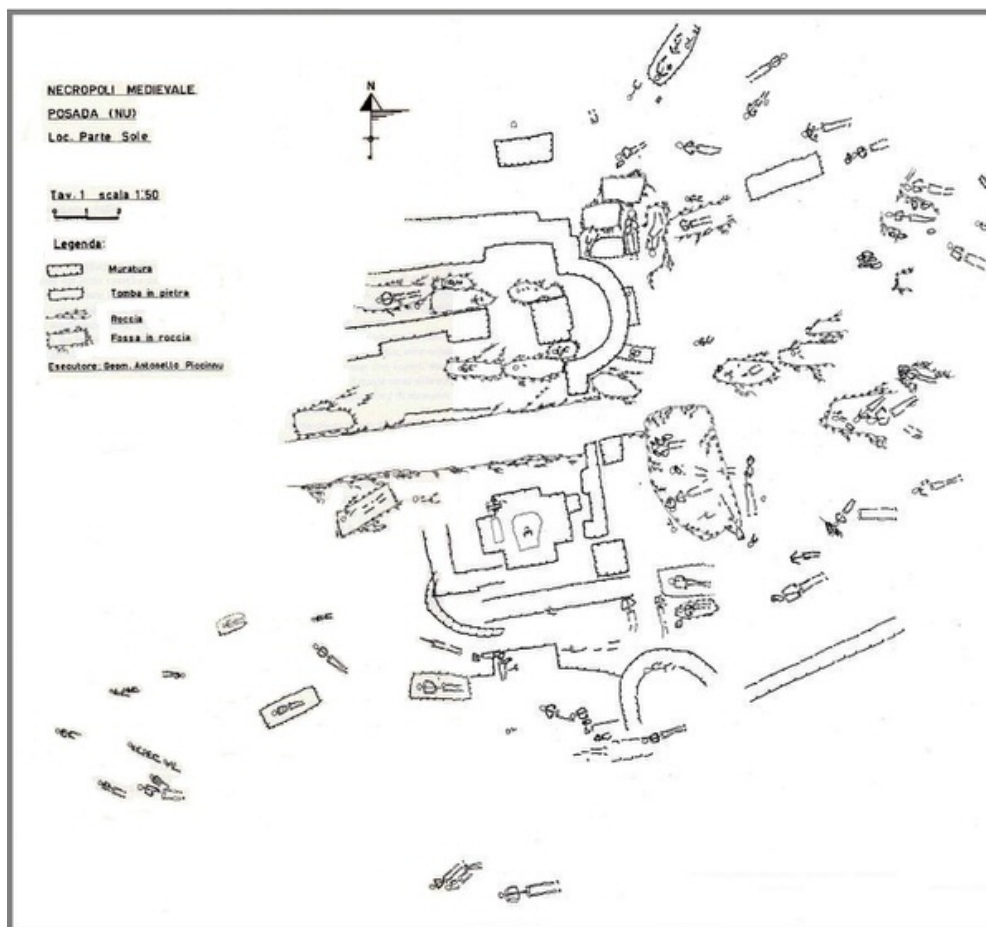
# The Castle della Fava

Patrimonio culturale  
**SARDEGNA** Virtual Archaeology



## Tremissis

In 1984 a medieval necropolis was discovered a few hundred metres from the Castello della Fava, situated in *Part'e Sole* (fig. 1). The excavation revealed 17 graves (many of them of children), some were pit tombs and others were carved in stone, dating from the fourteenth and fifteenth centuries according to the elements which constituted the grave goods.



**Fig. 1** - Necropolis of *Part'e Sole*, (Posada, NU) general plan of the site area (from D'ORIANO *et alii* 1989, fig. 41).

Since ancient times, the dead have been placed inside tombs together with their grave goods, which consisted of everyday objects (terracotta and glass vases, weapons, jewellery, coins), and which differed according to the era and social status of the deceased.

Clothing items (belts, buckles) and devotional objects (tags, rosaries) are often found within Medieval Age burials.

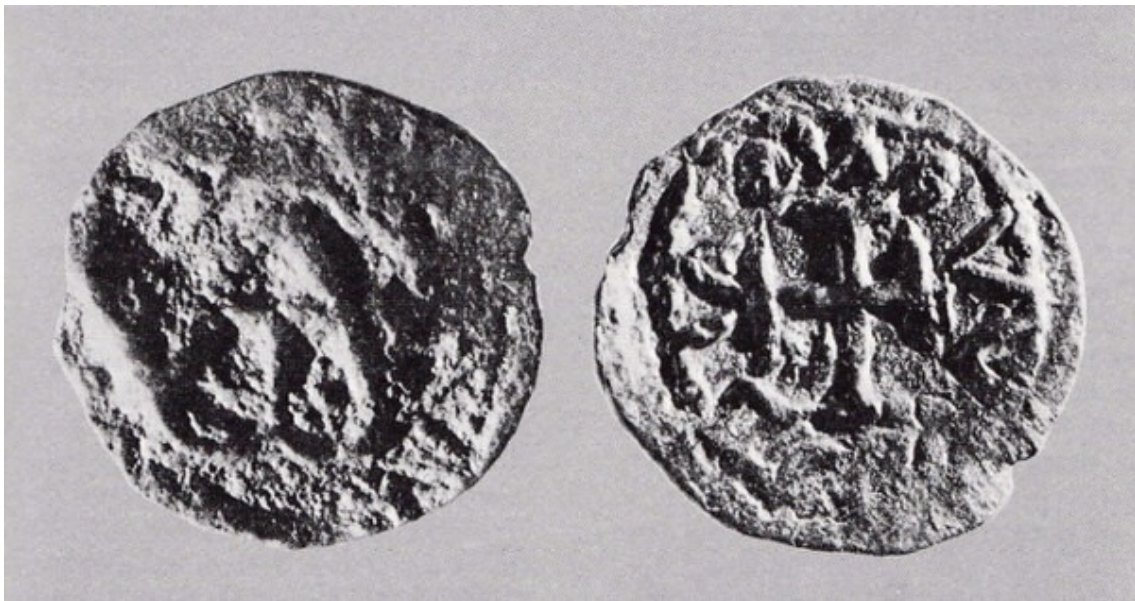
Among the artefacts found in the tombs of the necropolis of *Part'e Sole* there is a Byzantine Age coin, a tremissis, attributed to Emperor Leo III (figs. 2-3), whose discovery is particularly important because, during the reign of this sovereign, the Sardinian-Byzantine coin issue, which had begun with Constantine IV and is attributable to a mint probably located in Cagliari, ended. These coins are usually marked with the letter S (for Sardinia) on the obverse; this symbol, though, does not seem to be present on the Posada sample, which is in poor condition (fig. 4).



**Fig. 2** - Tremissis of Leo III, Syracuse (from <http://www.demoneta.com>).



**Fig. 3** - Leo III the Isaurian, Emperor of the East from 717 to 741 (from <https://lifeondoverbeach.wordpress.com/2010/10/05/the-use-of-sacred-images-in-christian-worship-the-2nd-of-5-posts-on-iconoclasm/>).



**Fig. 4** - Tremissis of Leo III, found in the necropolis of *Part'e Sole* (from D'ORIANO *et alii* 1989, fig. 45).

## ■ Credits

Coordination Prof. Rossana Martorelli

Deepening card edited by Dr. Maria Grazia Arru and Dr. Enrico Dirminti

## ■ Bibliography

D'ORIANO 1984 = R. D'ORIANO, *Posada (Nuoro): necropoli medievale nel centro dell'abitato. Nuovo Bullettino Archeologico Sardo*, 1, pp. 382-383.

D'ORIANO *et alii* 1989 = R. D'ORIANO *et alii*, *Posada. Località Parte Sole, necropoli medievale, in Il Suburbio delle città in Sardegna: persistenze e trasformazioni. Atti del III convegno di studio sull'archeologia tardoromana e altomedievale in Sardegna (Cuglieri, 28-29 Giugno 1986). Mediterraneo tardoantico e medioevale. Scavi e ricerche 7*, Taranto 1989, pp. 51-58.

MARTORELLI, AMANTE SIMONI 1986 = R. MARTORELLI, C. AMANTE SIMONI, *I corredi funerari e la suppellettile metallica, in L'archeologia romana e altomedievale nell'Oristanese. Atti del Convegno di Cuglieri (22-23 giugno 1984). Mediterraneo tardoantico e medioevale. Scavi e ricerche 3*, Taranto 1986, pp. 161-189.



UNIONE EUROPEA



REPUBBLICA ITALIANA



**REGIONE AUTÒNOMA DE SARDIGNA**  
**REGIONE AUTONOMA DELLA SARDEGNA**

## La Sardegna cresce con l'Europa



UNIONE EUROPEA

Progetto cofinanziato dall'Unione Europea  
Programma Operativo FESR 2007-2013

FESR - Fondo Europeo di Sviluppo Regionale - Asse I, Linea di Attività 1.2.3.a