



UNIONE EUROPEA



REPUBBLICA ITALIANA



REGIONE AUTÒNOMA DE SARDIGNA
REGIONE AUTONOMA DELLA SARDEGNA

The Castle della Fava

Patrimonio culturale
SARDEGNA Virtual Archaeology



■ Corinthian amphorae (Phoenician Age)

The term "amphora" indicates a terracotta container with a tapered or globular shape, provided with two handles, used in antiquity to transport liquid (wine, oil) or solid (wheat or other grains) foodstuffs.

In the historical centre of Posada, archaeological research has enabled the discovery of the presence of imported Phoenician and Punic materials, among which the oldest ones date back to between the end of the eighth and the sixth century B.C. and which testify to the existence of trade between Oriental populations and Sardinia.

Among the imported items which relate to Greek trading there are three fragments of type A Corinthian amphorae, used to transport oil (figs. 1, 2, 3).

The first two have two-colour rims; the second fragment also has an enlarged trumpet-shaped neck, an element which can be placed in a Greek colonial context; the last one, however, refers to a handle (fig. 4). The three pieces can be dated between the late seventh and the sixth century B.C. This type of amphorae, amply documented in Olbia, would seem to indicate a hypothetical trade route which mainly concerned the east coast of Sardinia.





Fig. 1 - Type A Corinthian amphora (from CARVALE, TOFFOLETTI 1998, p. 64).

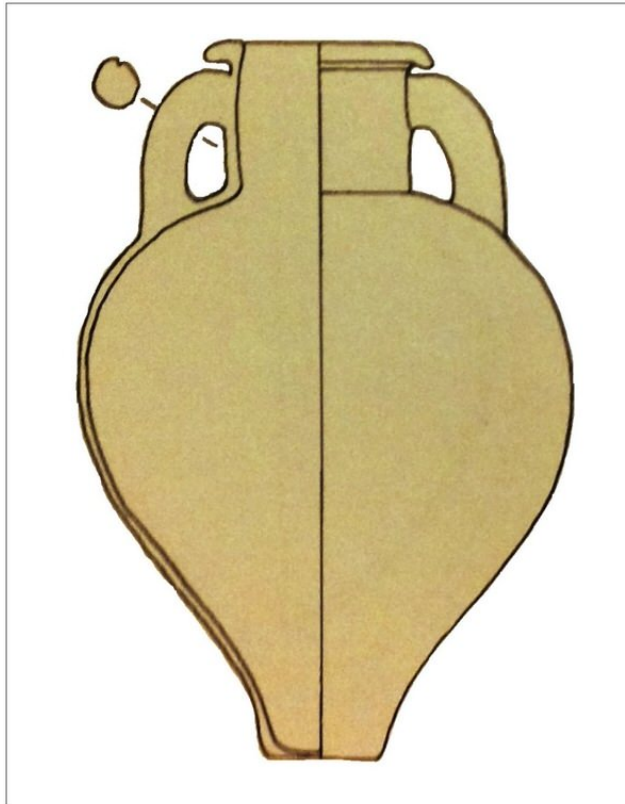


Fig. 2 - Type A Corinthian amphora (from CARVALE, TOFFOLETTI 1998, p. 64).

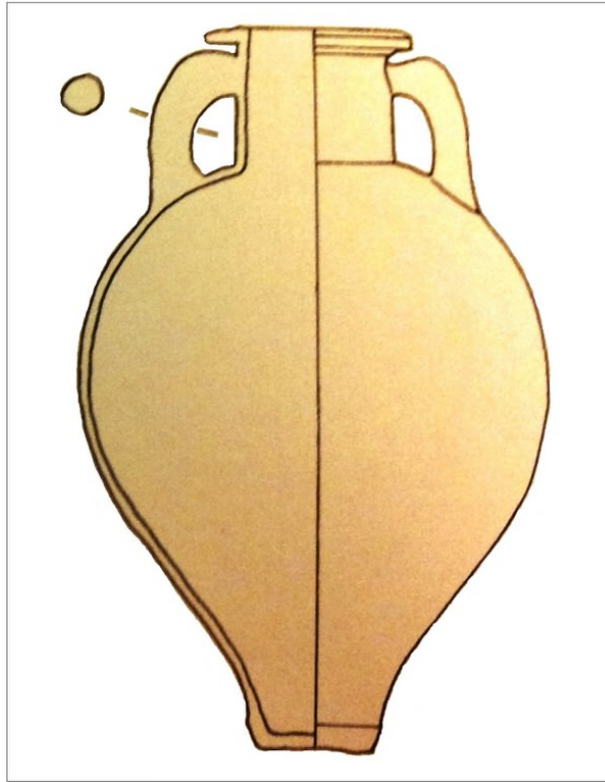


Fig. 3 - Type A Corinthian amphora (from CARVALE, TOFFOLETTI 1998, p. 64).

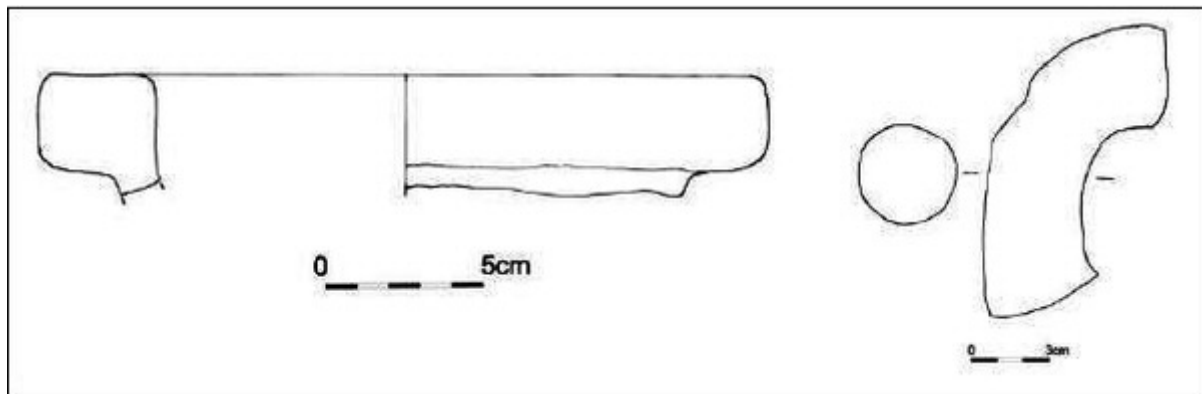


Fig. 4 - Fragments from Type A Corinthian amphorae (from SANCIU 2010, Figs. 14-15).

■ Credits

Coordination Prof. Rossana Martorelli

Deepening card edited by Dr. Maria Grazia Arru and Dr. Enrico Dirminti

■ Bibliography

CARVALE, TOFFOLETTI 1998 = A. CARVALE, I. TOFFOLETTI, *Anfore antiche. Conoscerle e identificarle*, Atripalda 1998.

SANCIU 2010 = A. SANCIU, *Fenici lungo la costa orientale sarda. Nuove acquisizioni. Fasti On Line Documents & Research* 174, 2010.

SANCIU 2011a = A. SANCIU, *Nuove testimonianze di età punica da Posada e dalla Sardegna centro-orientale. Sardinia, Corsica et Baleares Antiquae*, IX, pp. 51-58.

SANCIU 2011b = A. SANCIU, *Posada. Centro storico. Recupero di materiali archeologici. Erenzias. Rivista della Soprintendenza per i Beni Archeologici per le province di Sassari e Nuoro*, I, pp. 376-377.

SANCIU 2012 = A. SANCIU, *Nuove testimonianze d'età fenicia e punica dalla costa centro-orientale sarda. ArcheoArte. Rivista elettronica di Archeologia e Arte*, Supplemento 2012 al numero 1, pp. 167-182.



UNIONE EUROPEA



REPUBBLICA ITALIANA



REGIONE AUTÒNOMA DE SARDIGNA
REGIONE AUTONOMA DELLA SARDEGNA

La Sardegna cresce con l'Europa



UNIONE EUROPEA

Progetto cofinanziato dall'Unione Europea
Programma Operativo FESR 2007-2013

FESR - Fondo Europeo di Sviluppo Regionale - Asse I, Linea di Attività 1.2.3.a