



UNIONE EUROPEA



REPUBBLICA ITALIANA



REGIONE AUTÒNOMA DE SARDIGNA
REGIONE AUTONOMA DELLA SARDEGNA

Necropolis of Is Pirixeddus

Patrimonio culturale
SARDEGNA Virtual Archaeology



■ Oenochoe

The oenochoe was found in the Phoenician-Punic necropolis of Sulky, in an unknown grave. The rim was broken and has been reassembled (figs. 1-2).

This is a pitcher with a trilobate rim, i.e. With three lobes, separate neck and oval body used to contain liquids, i.e. Wine, as suggested by the etymology of the compound name from the term *Oinos* (wine) and the verb *cheo* (pour).



Fig. 1 - The oenochoe from Sulky decorated with palmetto leaves (photo by Unicity S.p.A).



Fig. 2 - The oenochoe from Sulky. Detail of the jug (photo by Unicity S.p.A.).





Fig. 3 - The oinochoe from Sulky (photo by Unicity S.p.A).

The *oinochoè* of *Sulky* can be dated between the end of the 6th and the 5th century B.C., as from the time of the Carthage conquest of Sardinia and for the whole of the 4th century B.C., the only Greek pottery imported in the Punic centres was from Athens and the region of Attica (fig. 3). Previously, starting from the second half of the 7th century B.C., the Phoenicians preferred bucchero pottery, black ceramic ware produced in the towns of Etruria; during the second half of the 6th century B.C., on the other hand, the Phoenicians were interested in ceramics from Eastern Greece and Corinth.

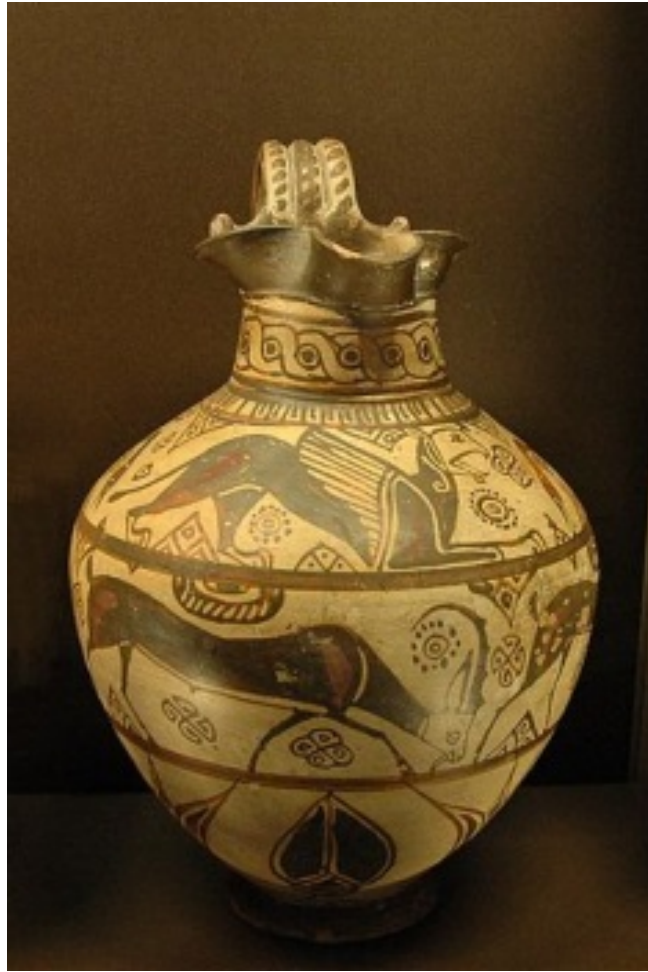


Fig. 4 - *Oinochoe* found in Rhodes, seventh century B.C .Louvre Museum, Paris
(from http://it.wikipedia.org/wiki/Oinochoe#/media/File:Oinoche_Camiros_fantastic_Louvre_A318.jpg).

This type of pottery was mainly found in graves, but it was also discovered in the town of *Sulky*, and is extremely widespread in Sardinia.

There are several variations of the same type, but in all cases, the *oinochoai* were containers for wine reminiscent of the Greek symposium carried out at funerals, possibly similar to the ancient eastern banquet ritual called *marzeah*, where wine was an important element, able to bring the gods closer, and the roots of which in near eastern culture are ancient, linked to the worship of heroes and kings. Besides their strong symbolic value, the presence of this type of ceramic also indicates a high social status, since these are luxury objects which not everyone could afford.

■ Credits

Deepening card edited by Dr. Cinzia Olianas

■ Bibliographic abbreviations

- BARTOLONI 2007 P. BARTOLONI, *Il museo archeologico comunale "F. Barreca" di Sant'Antioco*, Sassari 2007.
- BERNARDINI 2004 P. BERNARDINI, *I roghi del passaggio, le camere del silenzio: aspetti rituali e ideologici del mondo funerario fenicio e punico di Sardegna* in *Actas del III Seminario Internacional sobre Temas Fenicios* (Guardamar del Segura, 3-5 de mayo 2002), Alicante 2004, pp. 131-169.
- UNALI 2010 A. UNALI, *Sulky: la ceramica attica a vernice nera* in M. MILANESE, P. RUGGERI, C. VISMARA (a cura di), *Atti del XVIII Convegno Africa Romana (Olbia, 11-14 dicembre 2008)*, Roma 2010, pp. 1227-1240.





UNIONE EUROPEA



REPUBBLICA ITALIANA



REGIONE AUTÒNOMA DE SARDIGNA
REGIONE AUTONOMA DELLA SARDEGNA

La Sardegna cresce con l'Europa



UNIONE EUROPEA

Progetto cofinanziato dall'Unione Europea
Programma Operativo FESR 2007-2013

FESR - Fondo Europeo di Sviluppo Regionale - Asse I, Linea di Attività 1.2.3.a