



# Necropolis of Is Pirixeddus

Patrimonio culturale  
**SARDEGNA** Virtual Archaeology



## ■ Amphora

The jug was one of the items found in the tomb 11 AR of the Phoenician-Punic necropolis of Sulky, that was investigated by Paolo Bernardini and Piero Bartoloni in the years between 1985 and 1988. Based on context, and shape, we can date to the 5th century B.C.



**Fig. 1** - Amphora from tomb 11 AR in Sulky (photo by Unicity S.p.A).

Made of reddish clay, it has a characteristic decoration with parallel black lines, on the rim, between the rim and the neck, and at various heights of the body. There is a raised



rope around the neck. The handles begin just under the rim and are attached to the shoulder. The ovoid body lengthens and narrows down at the bottom so as to be slightly out of proportion. The bottom is flat (fig. 2),



**Fig. 2** - Amphora from Sulky (photo by Unicity S.p.A).

This was a vase for domestic use, very common in funeral collections too. Many examples were found in the Phoenician-Punic necropolis of Sulky, that, together with the ritual

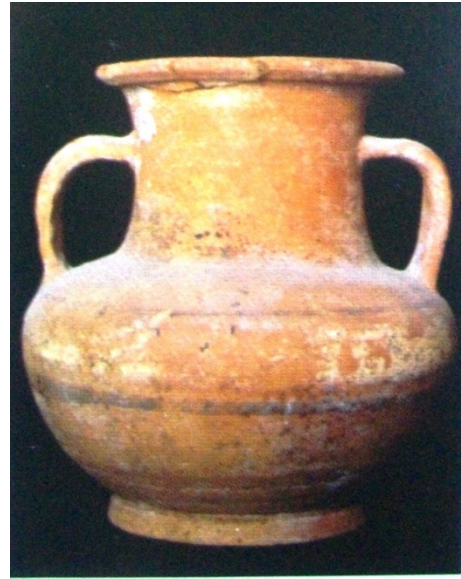
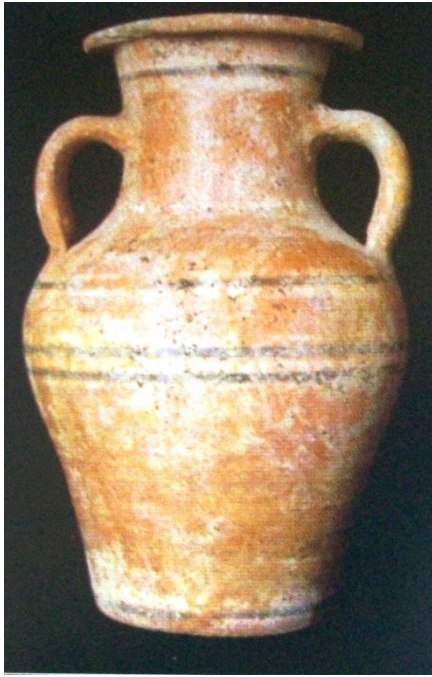


pitchers, were part of the essential items that accompanied the deceased on their last journey (fig. 3).



**Fig. 3** - Grave goods from grave 9 AR in Sulky, V century B.C.  
Municipal Archaeological Museum "F. Barreca" (photo by C. Olianias).

The various types of amphora found in Sulky bears witness to many types of shapes and decorations, from the most classic linked to near east tradition, to Greek imitation (figs. 4-5).



**Figs. 4-5** - Amphorae discovered in Sulky which imitate eastern Greek (left) and Attica (right) ones. Municipal Archaeological Museum "F. Barreca" (from Bartoloni 2007, p. 76, sheet 48).

The domestic amphorae would contain water or milk and were placed next to the deceased's head so that he could drink in the tomb and this is why there were small terracotta ladles that were used to collect the liquids (fig. 6).



**Fig. 6** - Amphora ladle from tomb 11 AR of Sulky. Municipal Archaeological Museum "F. Barreca"  
(photo by Unicity S.p.A.).



## ■ Credits

Deepening card edited by Dr. Cinzia Olianas

## ■ Bibliographic abbreviations

- BARTOLONI 2007      P. BARTOLONI, *Il museo archeologico comunale "F. Barreca" di Sant'Antioco*, Sassari 2007
- MUSCUSO 2008      S. MUSCUSO, *Il Museo "F. Barreca" di Sant'Antioco: le tipologie vascolari della necropoli di Sulky* = *Sardinia Corsica et Baleares Antiquae* VI, 2008, pp. 9-39.

## ■ Periodicals and magazines

- SARDINIA, CORSICA ET BALEARES ANTIQUAE**      *Sardinia, Corsica et Baleares Antiquae. An International Journal of Archaeology*, Sassari, I, 2003 e ss.



UNIONE EUROPEA



REPUBBLICA ITALIANA



**REGIONE AUTÒNOMA DE SARDIGNA**  
**REGIONE AUTONOMA DELLA SARDEGNA**

## La Sardegna cresce con l'Europa



UNIONE EUROPEA

Progetto cofinanziato dall'Unione Europea  
Programma Operativo FESR 2007-2013

FESR - Fondo Europeo di Sviluppo Regionale - Asse I, Linea di Attività 1.2.3.a