



UNIONE EUROPEA



REPUBBLICA ITALIANA



REGIONE AUTÒNOMA DE SARDIGNA
REGIONE AUTONOMA DELLA SARDEGNA

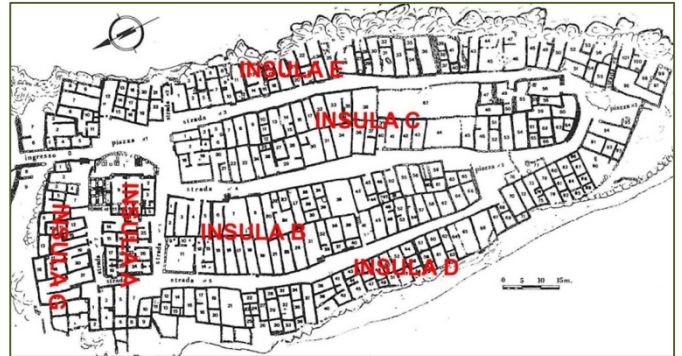
Archaeological area of Mount Sirai

Patrimonio culturale
SARDEGNA Virtual Archaeology



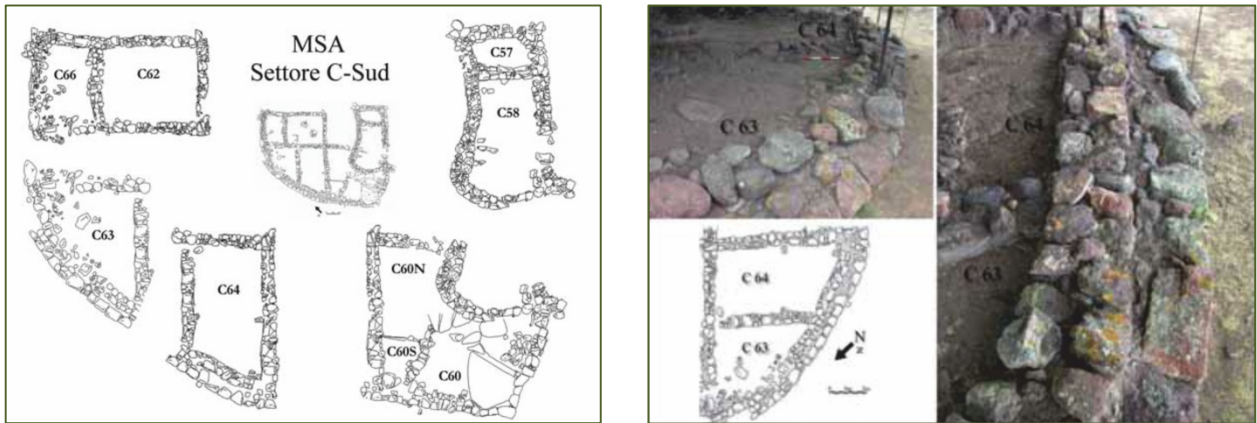
■ Insula 'C'

In the heavily constructed area of Monte Sirai, *insula* C has a compact development that ends in the south-east with a rounded outline (figs. 1-2).



Figs. 1, 2 - Monte Sirai (photo Unicity S.p.A.); map (drawn up by GUIRGUIS 2013, fig. 11)

The *insula* has three notable houses: one at the northern end, the 'Casa Amadasi', one in the centre, the 'Casa del lucernario di talco' and another in the centre but on the road no. 4, the 'Casa di tufo'. The timeline of the settlement is defined by its maximum expansion in the Punic and Roman-Republican age, but in the 'Casa del lucernario di talco' and especially in the sectors with a rounded perimeter (figs-3-4) Phoenician and Greek production materials have been found, showing the early frequentation and building phases on the site (fig. 5).



Figs. 3, 4 - Details from sector C-South (GUIRGUIS 2013, figs. 22-23)

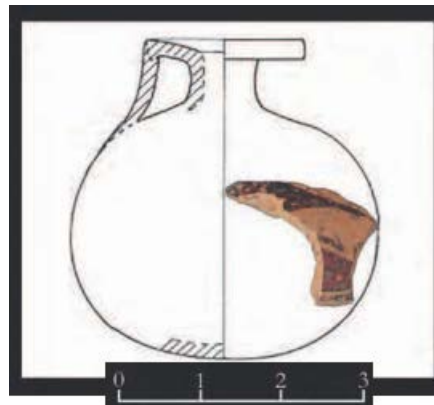


Fig. 5 - *Aryballos* (vase for perfumed ointments) from room C 66. Corinthian production, 575-550 B.C. (GUIRGUIS, UNALI 2014, tab. 32).

■ Credits

Deepening card edited by Dr. Giuseppina Manca di Mores and Prof. Marcello Madau

■ Bibliography

GUIRGUIS 2013 = M. GUIRGUIS, *Monte Sirai 1963-2013 mezzo secolo di indagini archeologiche*, Sassari.

GUIRGUIS, UNALI 2014 = M. GUIRGUIS, A. UNALI (a cura di), *Summer School di Archeologia fenicio-punica, Atti 2012* (Quaderni di Archeologia Sulcitana, 5).





UNIONE EUROPEA



REPUBBLICA ITALIANA



REGIONE AUTÒNOMA DE SARDIGNA
REGIONE AUTONOMA DELLA SARDEGNA

La Sardegna cresce con l'Europa



UNIONE EUROPEA

Progetto cofinanziato dall'Unione Europea
Programma Operativo FESR 2007-2013

FESR - Fondo Europeo di Sviluppo Regionale - Asse I, Linea di Attività 1.2.3.a