



UNIONE EUROPEA



REPUBBLICA ITALIANA



REGIONE AUTÒNOMA DE SARDIGNA  
REGIONE AUTONOMA DELLA SARDEGNA

# Archaeological area of Mount Sirai

Patrimonio culturale  
**SARDEGNA** Virtual Archaeology



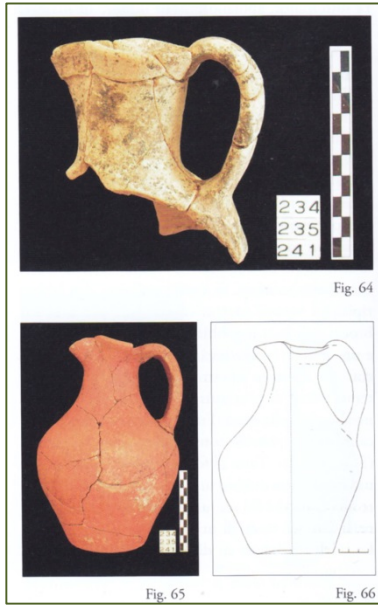
## ■ Items from the Hellenistic Age

In the necropolises found and investigated on Monte Sirai, this time phase is still not frequently represented, although development of research must find a higher number, given the urban documentation and timeline of the tophet (figs. 1-2), therefore identifying tombs from the community that lived on Monte Sirai in those two and a half centuries.



**Figs. 1, 2** - Ceramics from the tophet (BARTOLONI 1982, fig. 5); context 2nd century B.C. Of the dwelling area, area C64 (GUIRGUIS 2013, fig. 24).

With regard to the necropolises, we can approach the later limit traditionally set for Hellenism (323 B.C., date of Alexander the Great's death) for tomb 234-235.241, a sub-elliptical pit, with three tombs (one surely that of a child): the materials (figs. 3-4) are dated no earlier than the mid-4th century BC, or around this date.



**Figs. 3, 4** - Ceramics from tomb 234-235-241 (GUIRGUIS 2010, figs. 64-70).

## ■ Credits

Deepening card edited by Dr. Giuseppina Manca di Mores and Prof. Marcello Madau

## ■ Bibliography

BARTOLONI 1982 = P. BARTOLONI, *Monte Sirai 1981. La ceramica del tofet*, in *RStudFen*, X, pp. 283-290.

GUIRGUIS 2010 = M. GUIRGUIS, *Necropoli fenicia e punica di Monte Sirai. Indagini archeologiche 2005-2007* (*Studi di Storia Antica e di Archeologia*, 7), Ortacesus 2010.

GUIRGUIS 2013 = M. GUIRGUIS, *Monte Sirai 1963-2013 mezzo secolo di indagini archeologiche*, Sassari.





UNIONE EUROPEA



REPUBBLICA ITALIANA



**REGIONE AUTÒNOMA DE SARDIGNA**  
**REGIONE AUTONOMA DELLA SARDEGNA**

## La Sardegna cresce con l'Europa



UNIONE EUROPEA

Progetto cofinanziato dall'Unione Europea  
Programma Operativo FESR 2007-2013

FESR - Fondo Europeo di Sviluppo Regionale - Asse I, Linea di Attività 1.2.3.a