



UNIONE EUROPEA



REPUBBLICA ITALIANA



REGIONE AUTÓNOMA DE SARDIGNA
REGIONE AUTONOMA DELLA SARDEGNA

Archaeological area of Tharros

Patrimonio culturale
SARDEGNA Virtual Archaeology



■ The area in the Roman Age

Tharros is one of the most important Roman towns in Sardinia and owes its fortune to its geographical position that made it one of the main connection points for traffic from the Iberian peninsula towards Ostia, the port of Rome. In addition, the fertility of its soil made it popular for rustic settlements, founded by those working in the fields.

A few kilometres to the north of Tharros, on the site of San Salvatore di Cabras, there was an important centre of Roman Era life, from the Republican Age to the Late-Imperial Age. The remains of a *horreum* for grains have been found, dated to between 200 and 180 B.C., and the ruins of a thermal baths building from the 2nd-3rd century A.D. Can be seen. (fig. 1-3).

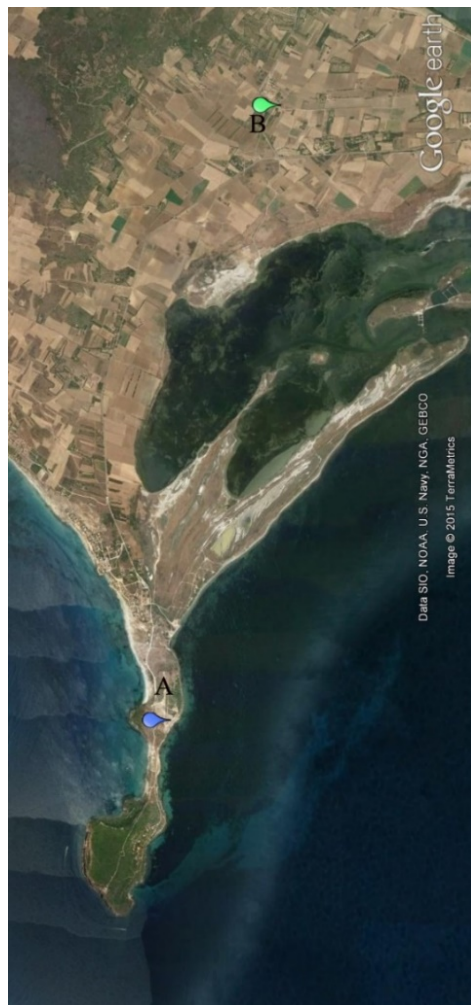


Fig. 1 - Location of San Salvatore di Cabras in relation to Tharros
(from Google Earth. Reprocessed by C. Tronchetti)



Fig. 2 - San Salvatore, Terme di Domu 'e Cubas (da Google Earth)

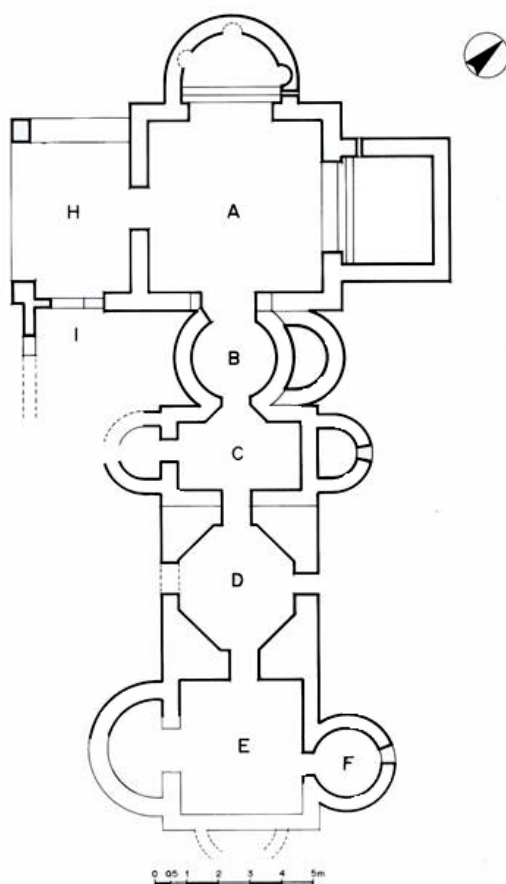


Fig. 3 - San Salvatore, Terme di Domu 'e Cubas; map (da DONATI, ZUCCA 1992)

This all seems connected to the presence of a hypogeum place of worship of a source of water, already frequented in an earlier age, that was decorated with pictures of divinities in the 4th century A.D. (Figs. 3-4).



Fig. 4 - The goddess Luna (?), Venus and Mars in the hypogeum in San Salvatore di Cabras (from DONATI, ZUCCA 1992)

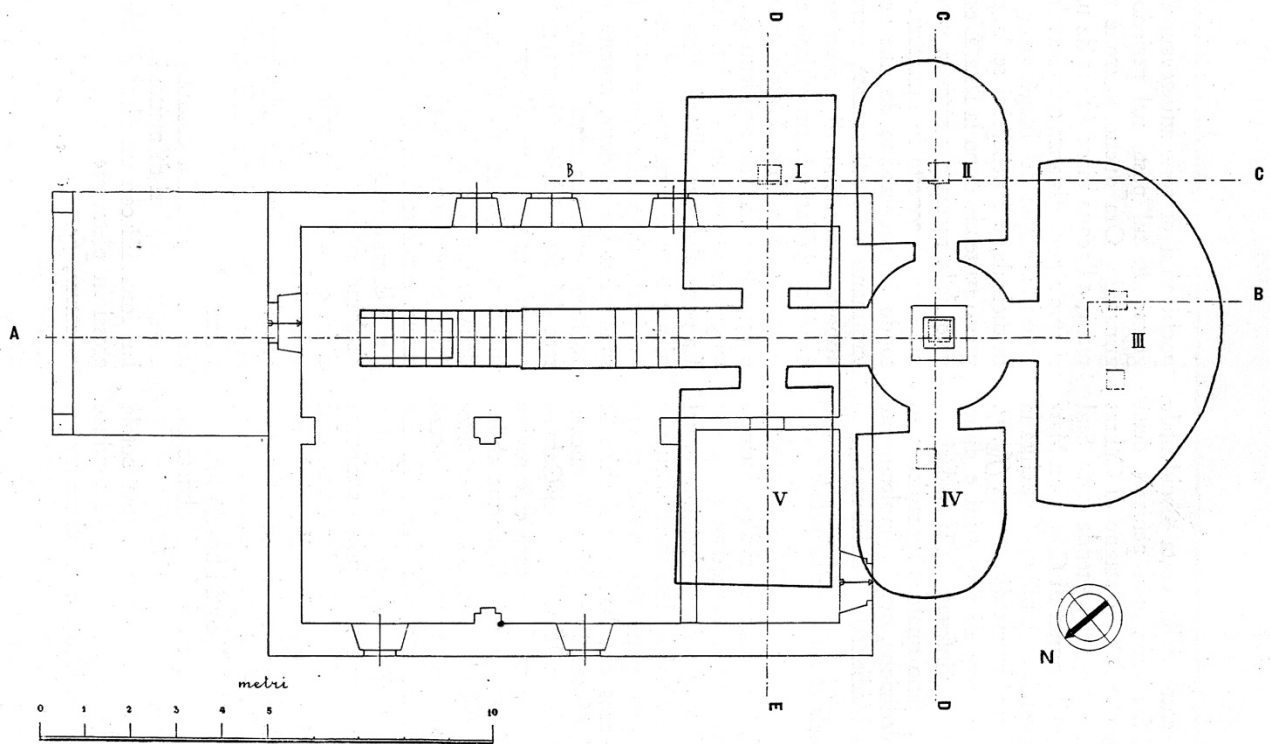


Fig. 5 - San Salvatore di Cabras, hypogeum. Map (from LEVI 1959)

Other proof of Roman presence in the territory can be found in Cuccuru S'Arriu, with an Imperial Age necropolis and one further north on the slopes of Monte Prama, again with Imperial tombs and a probable place of worship from the Republican era. We must presume a widespread presence of small settlements in the area linked to the cultivation of the fields, that then sent their products to Tharros, the consumer and distribution centre of foodstuffs, sent by sea.

■ Credits

Deeping card edition by Dr. Carlo Tronchetti

■ Bibliography

A. BEDINI, *Lo scavo*, in A. BEDINI ET ALII, *Giganti di pietra*, Cagliari 2012, pp. 200-205.

A. DONATI, R. ZUCCA, *L'ipogeo di San Salvatore*, Sassari 1992

V. SANTONI ET ALII, *Cabras – Cuccuru S'Arriu – Nota preliminare di scavo* in *Rivista di Studi Fenici*, X, 1982, pp. 37-127.





UNIONE EUROPEA



REPUBBLICA ITALIANA



REGIONE AUTÒNOMA DE SARDIGNA
REGIONE AUTONOMA DELLA SARDEGNA

La Sardegna cresce con l'Europa



UNIONE EUROPEA

Progetto cofinanziato dall'Unione Europea
Programma Operativo FESR 2007-2013

FESR - Fondo Europeo di Sviluppo Regionale - Asse I, Linea di Attività 1.2.3.a